



JULY
2020

MONTHLY TOURIST ARRIVALS REPORT

SRI LANKA TOURISM DEVELOPMENT AUTHORITY

www.slttda.lk

Photo courtesy of SLTDA, SLRC Lovingly Sri Lanka programme



SUMMARY

The total number of international tourist arrivals to Sri Lanka from January to July 2020 was 507,311. No tourist arrivals have been recorded for the month of July 2020 due to the termination of all passenger flights and ship arrivals into Sri Lanka from 18th March 2020. Total arrivals recorded from January to July 2019 was 1,124,150. In comparison to January to July last year (2019), a decline of 49.7 % has been recorded for the same period in 2020.

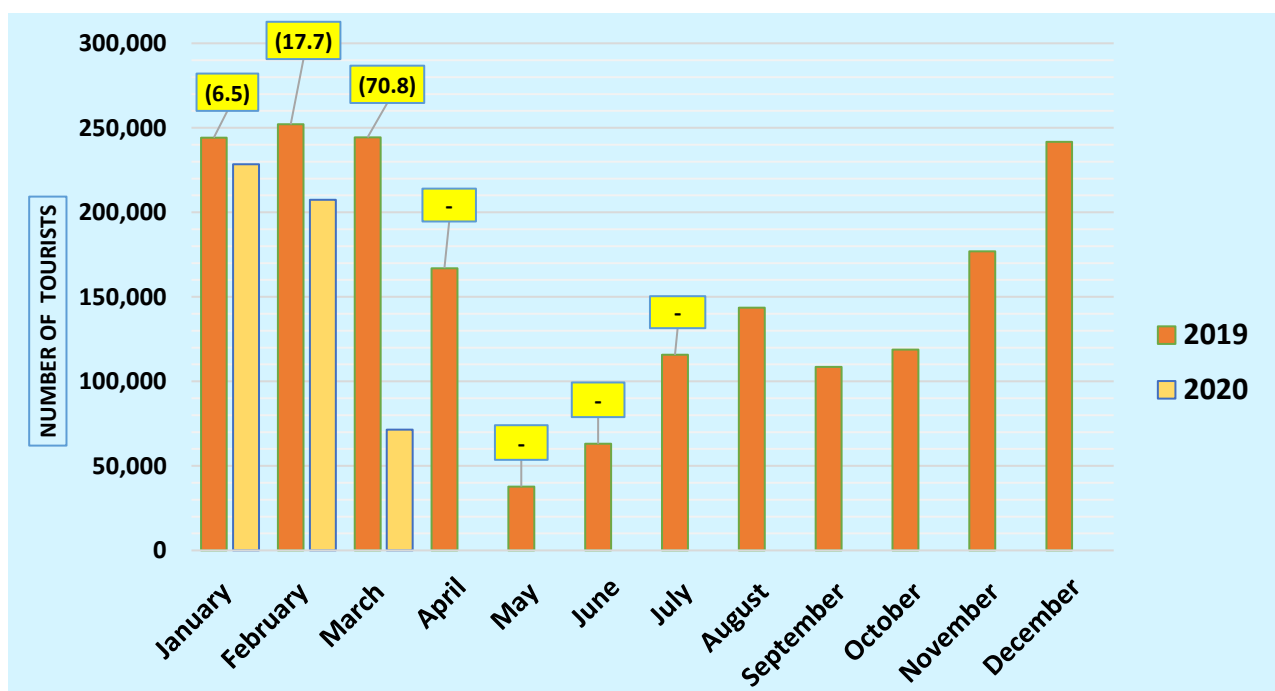
The largest source markets recorded for the period from January to July was India, followed by the United Kingdom and Russian Federation.

During this period almost 94 % of tourists travelled by air to Sri Lanka.

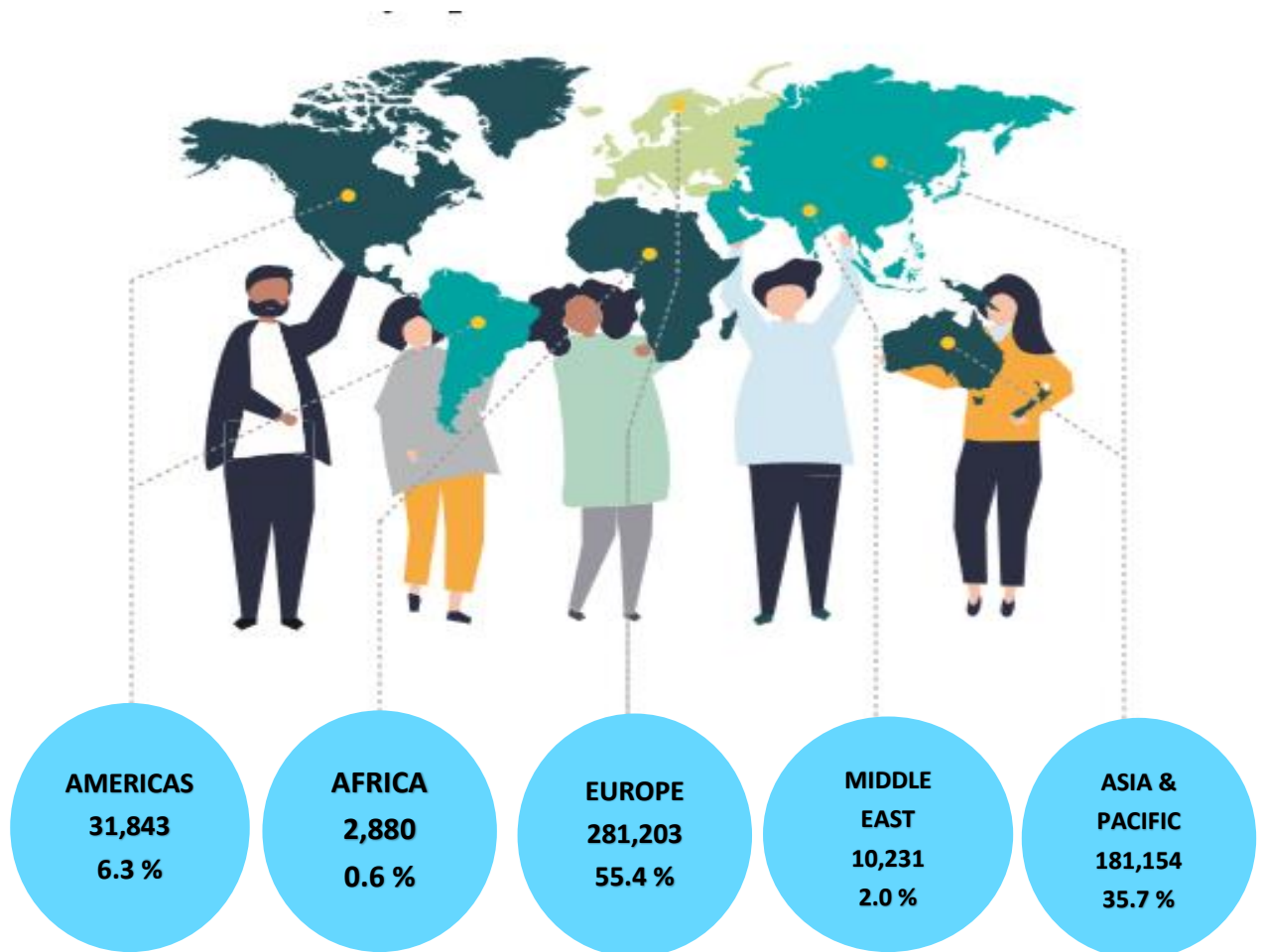
Month	2019	2020	% change 2019/20
January	244,239	228,434	(6.5)
February	252,033	207,507	(17.7)
March	244,328	71,370	(70.8)
April	166,975	0	-
May	37,802	0	-
June	63,072	0	-
July	115,701	0	-
August	143,587		
September	108,575		
October	118,743		
November	176,984		
December	241,663		
Total (Up to July)	1,124,150	507,311	(49.7)
Total	1,913,702		



Tourist Arrivals – July
Zero (0)
(Due to effect of the outbreak of COVID 19)



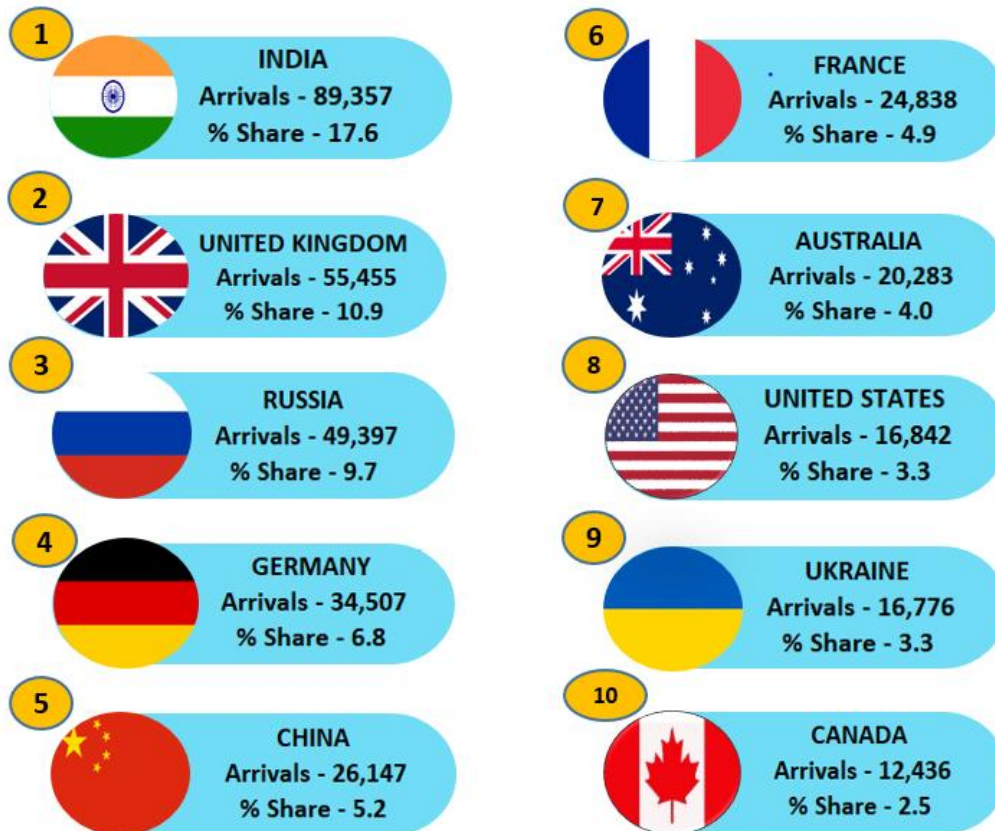
TOURIST ARRIVALS BY REGION AND PERCENTAGE SHARE JANUARY ~ JULY 2020



Europe became the largest source of tourist traffic to Sri Lanka with 55.4 % of the total traffic received from January to July 2020. Asia and Pacific accounted for 35.7% of the total traffic, Americas 6.3 %, Middle East 2.0 % and Africa 0.6%. In comparison to January - July last year the highest decline of 61.6 % was recorded for Middle East while Asia & Pacific and Africa recorded a decline of 60.3 %. Americas recorded a decline of 59.0 % whereas Europe recorded a decline of 49.4 %. The effect of the outbreak of COVID 19 is clearly evident as all countries have recorded a decline in arrivals from mid of February. However, country wise it is noteworthy that arrivals from Kazakhstan have recorded an increase of 79.9 % while the highest decline in arrivals (85.7%) have recorded from Cambodia.

TOP TEN SOURCE MARKETS – JANUARY TO JULY 2020

India, United Kingdom, Russia, Germany and China were Sri Lanka's top five international tourist generating markets in the period from January to July this year. India was the largest source of tourist traffic to Sri Lanka with 17.6 % of the total traffic received in above period. United Kingdom accounted for 10.9 % of the total traffic; while Russian Federation, Germany and China accounted for 9.7 %, 6.8 % and 5.2 % respectively. Comparing the top ten markets, the effect of the outbreak of COVID 19 is clearly evident as all countries have recorded a decline in arrivals except Russia. It is noteworthy that China has recorded the highest decline of 75%.



Rank	Country of Residence	Tourist Arrivals from January to July 2020			Tourist Arrivals January to July 2019	% Change Jan ~ July 2020/2019
		By Air	By Sea	Total		
1	India	86,639	2,718	89,357	175,181	(49.0)
2	United Kingdom	49,015	6,440	55,455	130,514	(57.5)
3	Russian Federation	48,457	940	49,397	45,722	8.0
4	Germany	32,495	2,012	34,507	79,823	(56.8)
5	China	25,910	237	26,147	104,486	(75.0)
6	France	24,330	508	24,838	62,543	(60.3)
7	Australia	17,896	2,387	20,283	52,698	(61.5)
8	United States	14,349	2,493	16,842	41,664	(59.6)
9	Ukraine	16,043	733	16,776	19,257	(12.9)
10	Canada	11,122	1,314	12,436	30,289	(58.9)

INTERNATIONAL TOURIST ARRIVALS BY COUNTRY OF RESIDENCE

	January ~ July 2020			Total Tourist Arrivals January to July 2019	% Cha Jan ~ July (2020/19)
	Tourist Arrivals				
	By Air	By Sea	Total		
<u>AMERICAS</u>	27,585	4,258	31,843	77,636	(59.0)
North America	25,723	3,904	29,627	72,935	(59.4)
Canada	11,122	1,314	12,436	30,289	(58.9)
Mexico	252	97	349	982	(64.5)
United States	14,349	2,493	16,842	41,664	(59.6)
Caribbean & Central America	211	15	226	502	(55.0)
Costa Rica	33	0	33	76	(56.6)
Jamaica	23	2	25	44	(43.2)
Others	155	13	168	382	(56.0)
South America	1,651	339	1,990	4,199	(52.6)
Argentina	352	64	416	929	(55.2)
Brazil	675	200	875	1,752	(50.1)
Chile	232	39	271	614	(55.9)
Colombia	190	11	201	406	(50.5)
Others	202	25	227	498	(54.4)
<u>AFRICA</u>	2,510	370	2,880	7,253	(60.3)
North Africa	638	51	689	1,453	(52.6)
Morocco	275	36	311	569	(45.3)
Sudan	137	6	143	302	(52.7)
Others	226	9	235	582	(59.6)
Sub-Saharan Africa	1,872	319	2,191	5,800	(62.2)
Kenya	106	4	110	296	(62.8)
Mauritius	132	38	170	349	(51.3)
Nigeria	25	0	25	105	(76.2)
South Africa	1,144	220	1,364	3,928	(65.3)
Others	465	57	522	1,122	(53.5)

	January ~ July 2020				
	Tourist Arrivals			Total Tourist Arrivals January to July 2019	% Cha Jan ~ July (2020/19)
	By Air	By Sea	Total		
ASIA & PACIFIC	173,837	7,317	181,154	456,791	(60.3)
North East Asia	36,944	376	37,320	134,481	(72.2)
China	25,910	237	26,147	104,486	(75.0)
Japan	6,613	31	6,644	18,014	(63.1)
South Korea	2,428	71	2,499	7,241	(65.5)
Taiwan	1,949	36	1,985	4,623	(57.1)
Others	44	1	45	117	(61.5)
South East Asia	13,496	1,431	14,927	38,881	(61.6)
Cambodia	372	0	372	2,601	(85.7)
Indonesia	948	166	1,114	2,606	(57.3)
Malaysia	3,433	61	3,494	9,181	(61.9)
Myanmar	473	59	532	1,488	(64.2)
Philippines	3,176	1,073	4,249	8,309	(48.9)
Singapore	2,506	39	2,545	7,651	(66.7)
Thailand	1,857	23	1,880	5,278	(64.4)
Vietnam	699	10	709	1,650	(57.0)
Others	32	0	32	117	(72.6)
Oceania	20,122	2,584	22,706	59,874	(62.1)
Australia	17,896	2,387	20,283	52,698	(61.5)
New Zealand	2,130	194	2,324	7,060	(67.1)
Others	96	3	99	116	(14.7)
South Asia	103,275	2,926	106,201	223,555	(52.5)
Afghanistan	146	0	146	254	(42.5)
Bangladesh	1,963	23	1,986	4,444	(55.3)
Bhutan	208	0	208	191	8.9
India	86,639	2,718	89,357	175,181	(49.0)
Iran	645	3	648	1,988	(67.4)
Maldives	9,404	3	9,407	32,227	(70.8)
Nepal	1,248	136	1,384	2,830	(51.1)
Pakistan	3,022	43	3,065	6,440	(52.4)

	January ~ July 2020			Total Tourist Arrivals January to July 2019	% Cha Jan ~ July (2020/19)
	Tourist Arrivals				
	By Air	By Sea	Total		
EUROPE	265,099	16,104	281,203	555,807	(49.4)
Northern Eur.	68,008	7,138	75,146	178,497	(57.9)
Denmark	4,769	136	4,905	13,112	(62.6)
Finland	2,216	82	2,298	5,006	(54.1)
Norway	2,954	65	3,019	9,663	(68.8)
Sweden	6,899	162	7,061	14,617	(51.7)
United Kingdom	49,015	6,440	55,455	130,514	(57.5)
Others	2,155	253	2,408	5,585	(56.9)
Western Eur.	79,156	3,073	82,229	208,075	(60.5)
Austria	4,188	112	4,300	9,828	(56.2)
Belgium	3,274	97	3,371	9,548	(64.7)
France	24,330	508	24,838	62,543	(60.3)
Germany	32,495	2,012	34,507	79,823	(56.8)
Netherlands	8,492	164	8,656	26,070	(66.8)
Switzerland	6,217	172	6,389	19,633	(67.5)
Others	160	8	168	630	(73.3)
Central / Eastern Europe	97,718	2,655	100,373	112,120	(10.5)
Belarus	2,606	32	2,638	3,084	(14.5)
Czech Republic	7,580	19	7,599	13,191	(42.4)
Estonia	1,177	8	1,185	1,538	(23.0)
Hungary	1,493	95	1,588	2,812	(43.5)
Kazakhstan	2,267	66	2,333	1,297	79.9
Lithuania	1,037	17	1,054	1,739	(39.4)
Poland	11,481	427	11,908	11,974	(0.6)
Romania	1,574	150	1,724	3,311	(47.9)
Russian Federation	48,457	940	49,397	45,722	8.0
Slovakia	1,488	25	1,513	3,269	(53.7)
Ukraine	16,043	733	16,776	19,257	(12.9)
Others	2,515	143	2,658	4,926	(46.0)

	January ~ July 2020			Total Tourist Arrivals January to July 2019	% Cha Jan ~ July (2020/19)
	Tourist Arrivals				
	By Air	By Sea	Total		
Southern / Mediterranean Europe	20,217	3,238	23,455	57,115	(58.9)
Greece	1,092	481	1,573	4,003	(60.7)
Italy	7,135	1,468	8,603	21,966	(60.8)
Portugal	1,377	225	1,602	3,024	(47.0)
Spain	3,255	130	3,385	12,210	(72.3)
Turkey	1,517	604	2,121	2,486	(14.7)
Israel	3,422	134	3,556	7,756	(54.2)
Others	2,419	196	2,615	5,670	(53.9)
MIDDLE EAST	10,139	92	10,231	26,663	(61.6)
Bahrain	543	6	549	1,268	(56.7)
Egypt	922	34	956	1,949	(50.9)
Iraq	137	1	138	414	(66.7)
Jordan	621	6	627	1,613	(61.1)
Kuwait	822	3	825	2,032	(59.4)
Lebanon	480	3	483	2,588	(81.3)
Oman	1,041	4	1,045	2,754	(62.1)
Qatar	128	1	129	673	(80.8)
Saudi Arabia	4,745	10	4,755	10,008	(52.5)
United Arab Emirates	350	2	352	2,256	(84.4)
Others	350	22	372	1,108	(66.4)
TOTAL	479,170	28,141	507,311	1,124,150	(54.9)

* All visitor arrival statistics in this report are from the Department of Immigration & Emigration.

Sri Lanka suspends tourist arrivals from all countries from 18th March 2020 due to COVID-19