



August
2020

MONTHLY TOURIST ARRIVALS REPORT

SRI LANKA TOURISM DEVELOPMENT AUTHORITY

www.sltda.lk

Photo courtesy of SLTDA, SLRC. Lovingly Sri Lanka programme



SUMMARY

The total number of international tourist arrivals to Sri Lanka from **January to March 2020** was 507,311. No tourist arrivals have been recorded since April to August due to the termination of all passenger flight & ship arrivals into Sri Lanka from 18th March 2020. Total arrivals recorded from January to August 2019 was 1,267,737. In comparison to January to August last year (2019) a decline 60.0 % has been recorded for the same period in 2020.

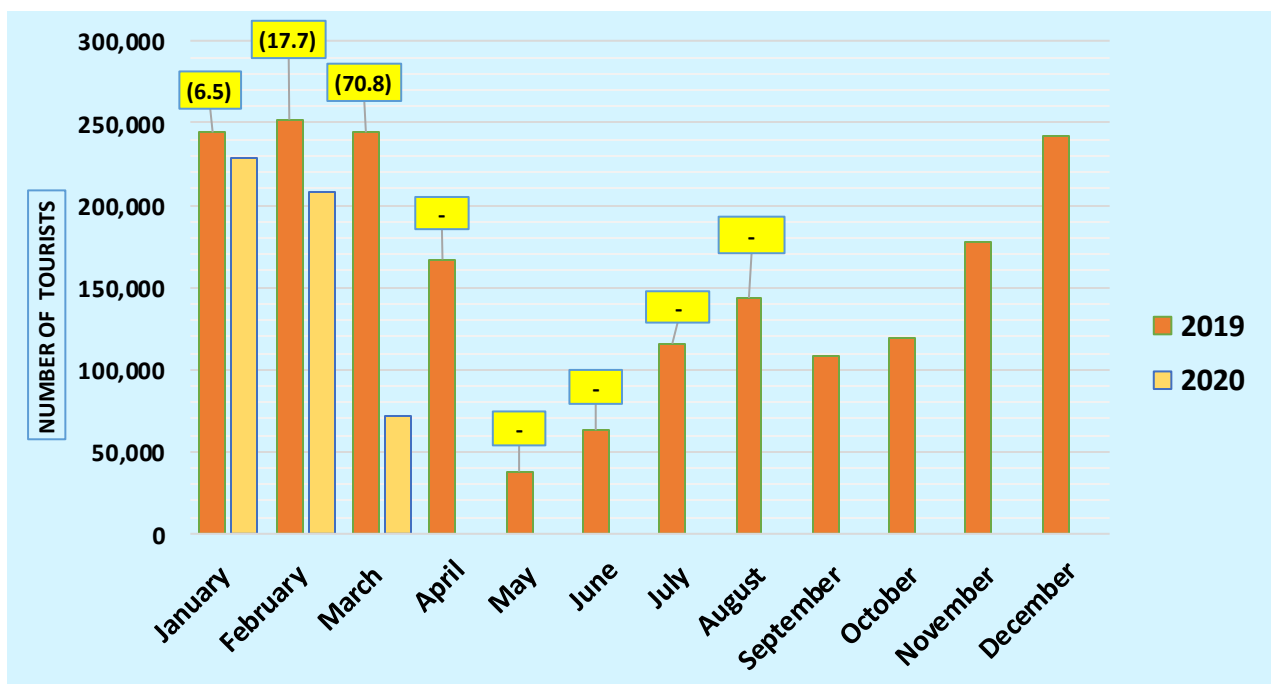
The largest source market recorded from January to August was India, followed by the United Kingdom and Russian Federation.

Almost 95 % of tourists travelled by air to Sri Lanka.

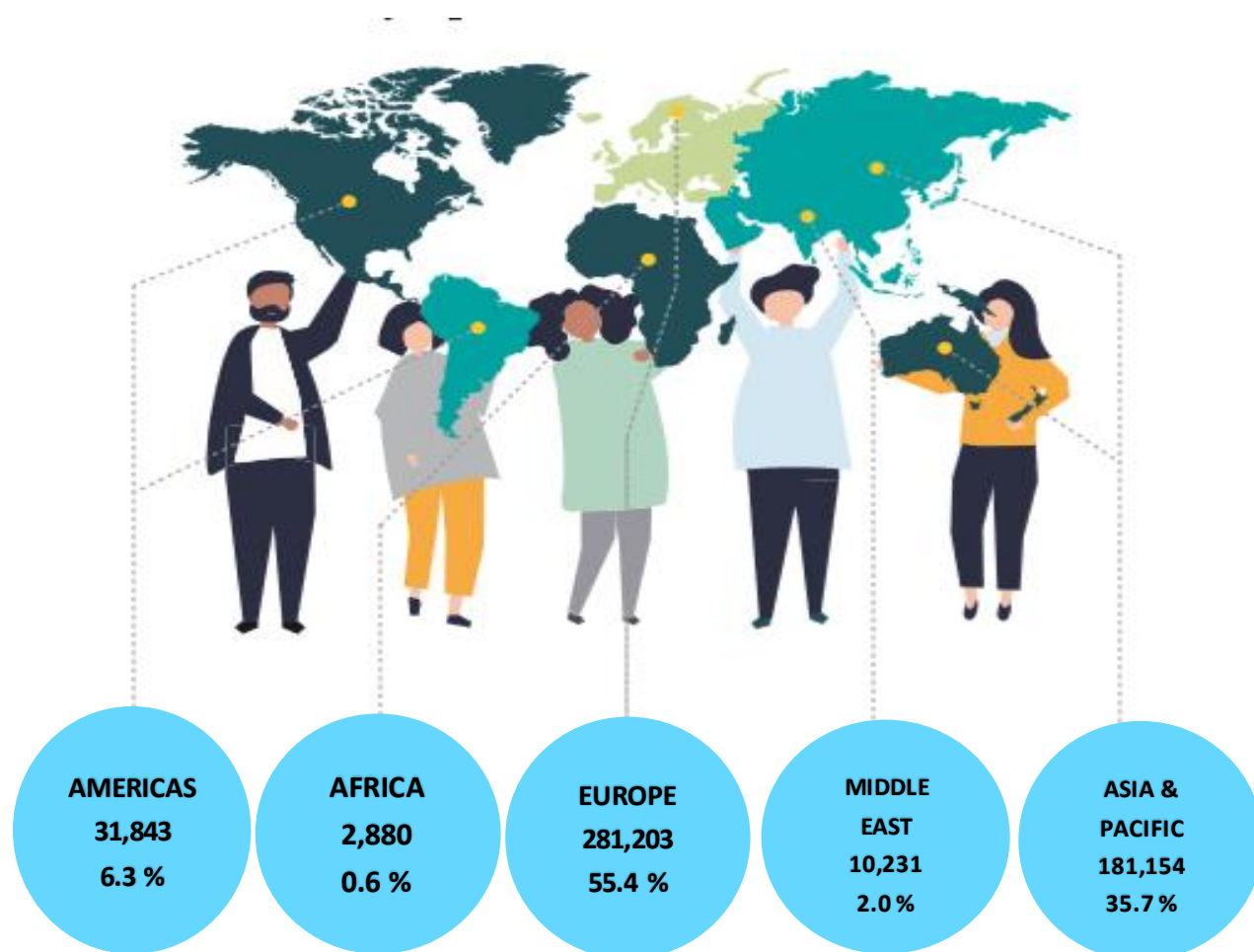
Month	2019	2020	% change 2019/20
January	244,239	228,434	(6.5)
February	252,033	207,507	(17.7)
March	244,328	71,370	(70.8)
April	166,975	0	-
May	37,802	0	-
June	63,072	0	-
July	115,701	0	-
August	143,587	0	-
September	108,575		
October	118,743		
November	176,984		
December	241,663		
Total (Up to Aug)	1,267,737	507,311	(60.0)
Total	1,913,702		



**Tourist Arrivals – August
Zero (0)**
(Due to effect of the outbreak of COVID 19)



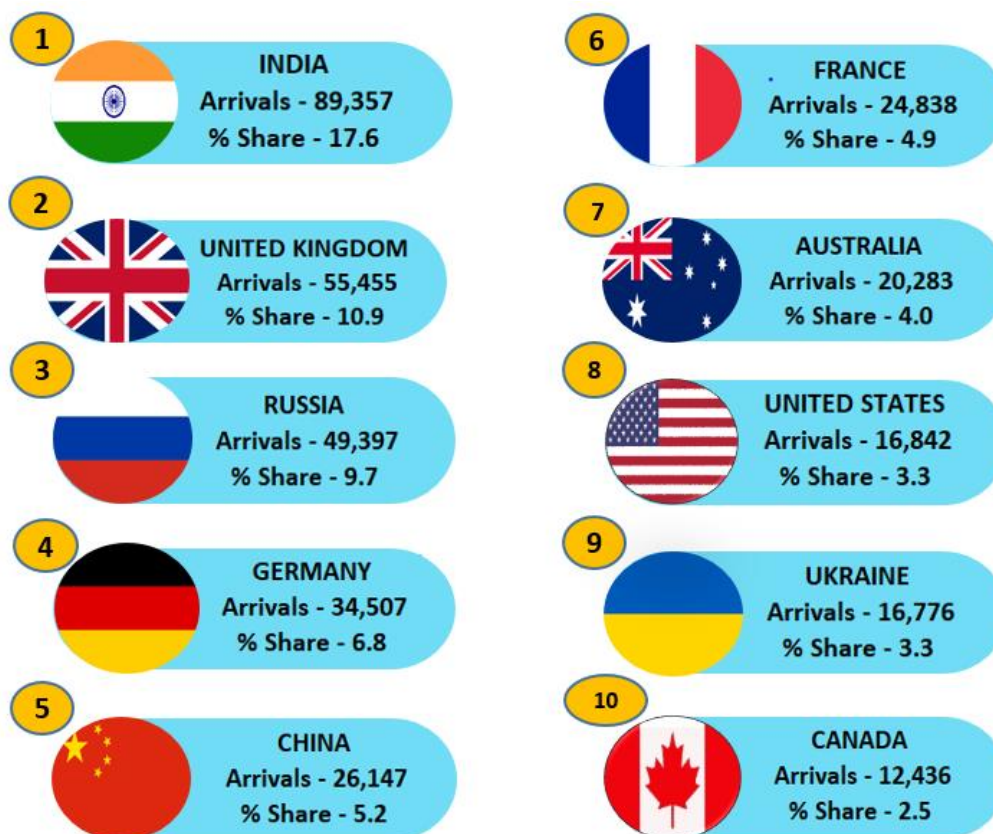
TOURIST ARRIVALS BY REGION AND PERCENTAGE SHARE JANUARY ~ AUGUST 2020



Europe became the largest source of tourist traffic to Sri Lanka with 55.4 % of the total traffic received from January to August 2020. Asia and Pacific accounted for 35.7% of the total traffic, Americas 6.3 %, Middle East 2.0 % and Africa 0.6%. In comparison to January - August last year the highest decline of 68.4 % were recorded for Africa and Middle East while Asia & Pacific recorded a decline of 65.8 %. Americas recorded a decline of 63.3 %. A decline of 53.9 % was recorded from Europe. The effect of the outbreak of COVID 19 is clearly evident as all countries have recorded a decline in arrivals from mid of February. However, country wise it is noteworthy that arrivals from Kazakhstan have recorded an increase of 75.2 % while the highest decline in arrivals (87.9 %) have recorded from Kenya.

TOP TEN SOURCE MARKETS – JANUARY ~ AUGUST 2020

India, United Kingdom, Russia, Germany and China were Sri Lanka's top five international tourist generating markets in the period from January to August this year. India was the largest source of tourist traffic to Sri Lanka with 17.6 % of the total traffic received in above period. United Kingdom accounted for 10.9 % of the total traffic; while Russian Federation, Germany and France accounted for 9.7 %, 6.8 % and 5.2 % respectively. Comparing the top ten markets, the effect of the outbreak of COVID 19 is clearly evident as all countries have recorded a decline in arrivals except Russia. It is noteworthy that China has recorded the highest at 77.1 %.



Rank	Country of Residence	Tourist Arrivals from January to August 2020			Tourist Arrivals January to August 2019	% Change Jan ~ August 2020/2019
		By Air	By Sea	Total		
1	India	86,639	2,718	89,357	212,749	(58.0)
2	United Kingdom	49,015	6,440	55,455	144,646	(61.7)
3	Russian Federation	48,457	940	49,397	47,054	5.0
4	Germany	32,495	2,012	34,507	87,490	(60.6)
5	China	25,910	237	26,147	113,989	(77.1)
6	France	24,330	508	24,838	69,630	(64.3)
7	Australia	17,896	2,387	20,283	58,683	(65.4)
8	United States	14,349	2,493	16,842	46,350	(63.7)
9	Ukraine	16,043	733	16,776	20,242	(17.1)
10	Canada	11,122	1,314	12,436	34,341	(63.8)

INTERNATIONAL TOURIST ARRIVALS BY COUNTRY OF RESIDENCE

	January ~ August 2020				
	Tourist Arrivals			Total Tourist Arrivals January to August 2019	% Cha Jan ~ August (2020/19)
	By Air	By Sea	Total		
<u>AMERICAS</u>	27,585	4,258	31,843	86,717	(63.3)
North America	25,723	3,904	29,627	81,726	(63.7)
Canada	11,122	1,314	12,436	34,341	(63.8)
Mexico	252	97	349	1035	(66.3)
United States	14,349	2,493	16,842	46,350	(63.7)
Caribbean & Central America	211	15	226	558	(59.5)
Costa Rica	33	0	33	85	(61.2)
Jamaica	23	2	25	47	(46.8)
Others	155	13	168	426	(60.6)
South America	1,651	339	1,990	4,433	(55.1)
Argentina	352	64	416	972	(57.2)
Brazil	675	200	875	1,827	(52.1)
Chile	232	39	271	643	(57.9)
Colombia	190	11	201	442	(54.5)
Others	202	25	227	549	(58.7)
<u>AFRICA</u>	2,510	370	2,880	9,117	(68.4)
North Africa	638	51	689	1,655	(58.4)
Morocco	275	36	311	655	(52.5)
Sudan	137	6	143	356	(59.8)
Others	226	9	235	644	(63.5)
Sub-Saharan Africa	1,872	319	2,191	7,462	(70.6)
Kenya	106	4	110	911	(87.9)
Mauritius	132	38	170	384	(55.7)
Nigeria	25	0	25	113	(77.9)
South Africa	1,144	220	1,364	4,233	(67.8)
Others	465	57	522	1,821	(71.3)

	January ~ August 2020			Total Tourist Arrivals January to August 2019	% Cha Jan ~ August (2020/19)
	Tourist Arrivals				
	By Air	By Sea	Total		
ASIA & PACIFIC	173,837	7,317	181,154	529,628	(65.8)
North East Asia	36,944	376	37,320	147,598	(74.7)
China	25,910	237	26,147	113,989	(77.1)
Japan	6,613	31	6,644	20,442	(67.5)
South Korea	2,428	71	2,499	8,040	(68.9)
Taiwan	1,949	36	1,985	5,005	(60.3)
Others	44	1	45	122	(63.1)
South East Asia	13,496	1,431	14,927	44,890	(66.7)
Cambodia	372	0	372	2,623	(85.8)
Indonesia	948	166	1,114	3,085	(63.9)
Malaysia	3,433	61	3,494	10,714	(67.4)
Myanmar	473	59	532	2,141	(75.2)
Philippines	3,176	1,073	4,249	9,430	(54.9)
Singapore	2,506	39	2,545	8,853	(71.3)
Thailand	1,857	23	1,880	6,069	(69.0)
Vietnam	699	10	709	1,847	(61.6)
Others	32	0	32	128	(75.0)
Oceania	20,122	2,584	22,706	66,865	(66.0)
Australia	17,896	2,387	20,283	58,683	(65.4)
New Zealand	2,130	194	2,324	8,053	(71.1)
Others	96	3	99	129	(23.3)
South Asia	103,275	2,926	106,201	270,275	(60.7)
Afghanistan	146	0	146	308	(52.6)
Bangladesh	1,963	23	1,986	5,248	(62.2)
Bhutan	208	0	208	204	2.0
India	86,639	2,718	89,357	212,749	(58.0)
Iran	645	3	648	2,105	(69.2)
Maldives	9,404	3	9,407	37,157	(74.7)
Nepal	1,248	136	1,384	3,228	(57.1)
Pakistan	3,022	43	3,065	9,276	(67.0)

	January ~ August 2020			Total Tourist Arrivals January to August 2019	% Cha Jan ~ August (2020/19)
	Tourist Arrivals				
	By Air	By Sea	Total		
EUROPE	265,099	16,104	281,203	609,865	(53.9)
Northern Eur.	68,008	7,138	75,146	194,764	(61.4)
Denmark	4,769	136	4,905	13,609	(64.0)
Finland	2,216	82	2,298	5,118	(55.1)
Norway	2,954	65	3,019	10,338	(70.8)
Sweden	6,899	162	7,061	14,988	(52.9)
United Kingdom	49,015	6,440	55,455	144,646	(61.7)
Others	2,155	253	2,408	6,065	(60.3)
Western Eur.	79,156	3,073	82,229	229,928	(64.2)
Austria	4,188	112	4,300	10,495	(59.0)
Belgium	3,274	97	3,371	11,056	(69.5)
France	24,330	508	24,838	69,630	(64.3)
Germany	32,495	2,012	34,507	87,490	(60.6)
Netherlands	8,492	164	8,656	29,590	(70.7)
Switzerland	6,217	172	6,389	20,944	(69.5)
Others	160	8	168	723	(76.8)
Central / Eastern Europe	97,718	2,655	100,373	116,676	(14.0)
Belarus	2,606	32	2,638	3,172	(16.8)
Czech Republic	7,580	19	7,599	13,776	(44.8)
Estonia	1,177	8	1,185	1,557	(23.9)
Hungary	1,493	95	1,588	2,902	(45.3)
Kazakhstan	2,267	66	2,333	1,332	75.2
Lithuania	1,037	17	1,054	1,814	(41.9)
Poland	11,481	427	11,908	12,532	(5.0)
Romania	1,574	150	1,724	3,604	(52.2)
Russian Federation	48,457	940	49,397	47,054	5.0
Slovakia	1,488	25	1,513	3,457	(56.2)
Ukraine	16,043	733	16,776	20,242	(17.1)
Others	2,515	143	2,658	5,234	(49.2)

	January ~ August 2020			Total Tourist Arrivals January to August 2019	% Cha Jan ~ August (2020/19)
	Tourist Arrivals				
	By Air	By Sea	Total		
<u>Southern/ Mediterranean Europe</u>	20,217	3,238	23,455	68,497	(65.8)
Greece	1,092	481	1,573	4,518	(65.2)
Italy	7,135	1,468	8,603	25,306	(66.0)
Portugal	1,377	225	1,602	3,455	(53.6)
Spain	3,255	130	3,385	16,629	(79.6)
Turkey	1,517	604	2,121	2,825	(24.9)
Israel	3,422	134	3,556	9,541	(62.7)
Others	2,419	196	2,615	6,223	(58.0)
<u>MIDDLE EAST</u>	10,139	92	10,231	32,410	(68.4)
Bahrain	543	6	549	1,586	(65.4)
Egypt	922	34	956	2,245	(57.4)
Iraq	137	1	138	547	(74.8)
Jordan	621	6	627	1,881	(66.7)
Kuwait	822	3	825	2,552	(67.7)
Lebanon	480	3	483	2,998	(83.9)
Oman	1,041	4	1,045	3,080	(66.1)
Qatar	128	1	129	808	(84.0)
Saudi Arabia	4,745	10	4,755	12,365	(61.5)
United Arab Emirates	350	2	352	2,695	(86.9)
Others	350	22	372	1,653	(77.5)
TOTAL	479,170	28,141	507,311	1,267,737	(60.0)

* All visitor arrival statistics in this report are from the Department of Immigration & Emigration.

Sri Lanka suspends tourist arrivals from all countries from 18th March 2020 due to COVID-19