

**JANUARY
2021**

MONTHLY TOURIST ARRIVALS REPORT



Sri Lanka Tourism Development Authority
www.sltda.gov.lk

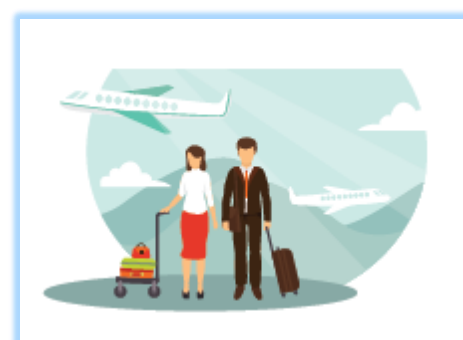


SUMMARY

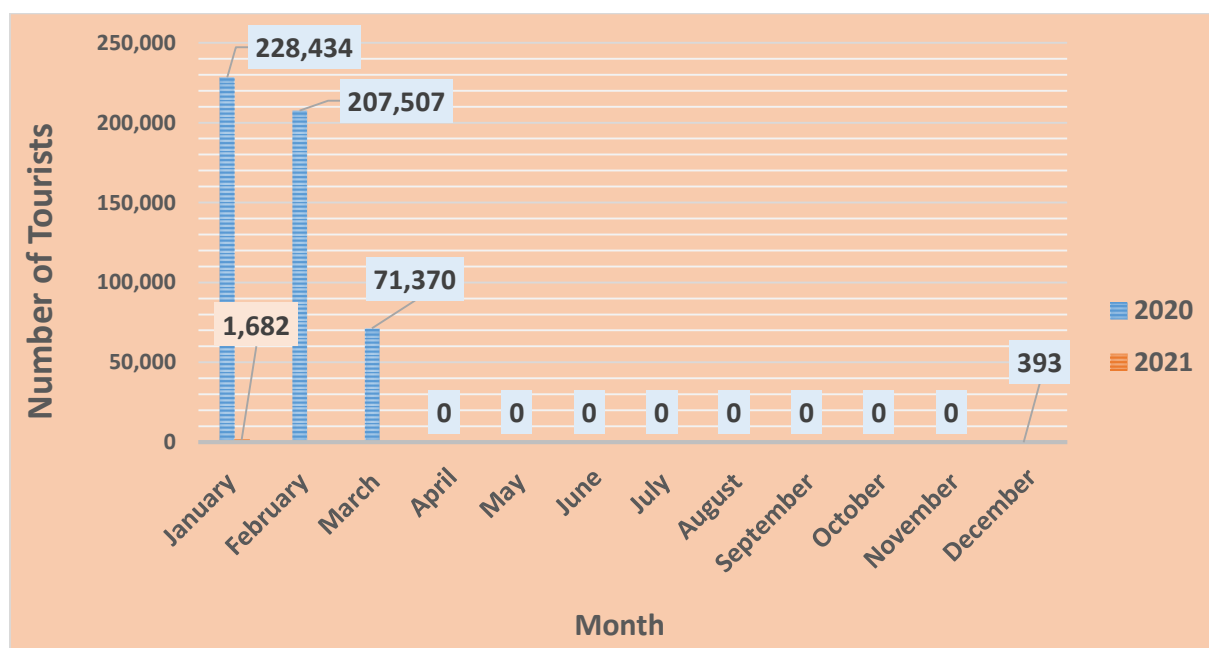
The total number of international tourist arrivals to Sri Lanka during January 2021 was 1,682. Sri Lanka reopened its borders on 21st January 2021, following a 10-month pandemic-induced closure since 18th March 2020. In comparison to January last year (2020), there was a decline of 99.3% when the arrivals were 228,434. The figures reflect the unprecedented health, social and economic crisis caused by the outbreak of the COVID-19 pandemic. Globally International tourist arrivals plunged by 74% in 2020 over the previous year with the travel restrictions imposed by almost all the destinations since the month of April (World Tourism Barometer, January 2021).

The largest source markets recorded for the month of January was Ukraine, followed by the Belarus and China.

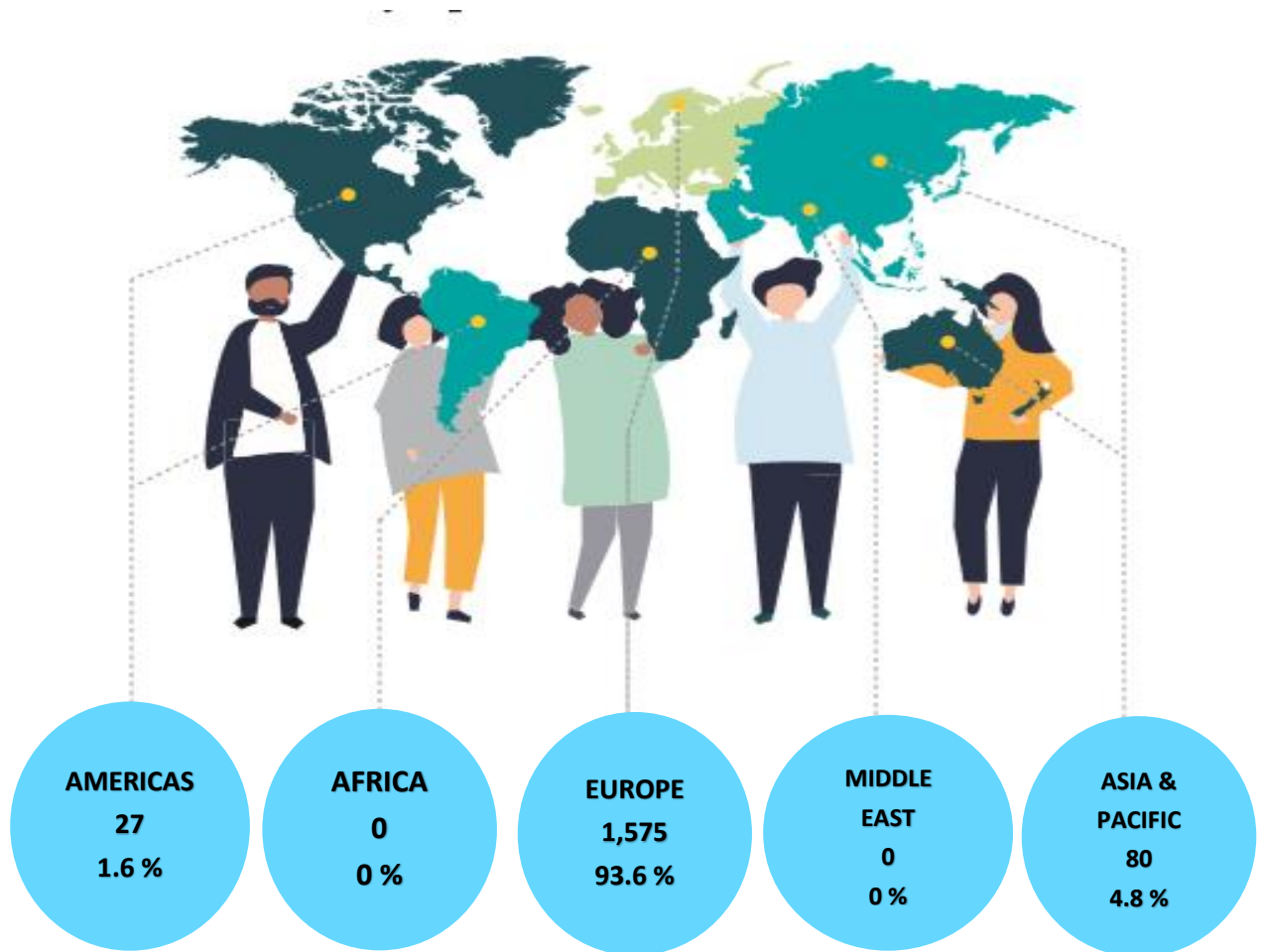
Month	2020	2021	% change 2020/21
January	228,434	1,682	(99.3)
February	207,507		
March	71,370		
April	0		
May	0		
June	0		
July	0		
August	0		
September	0		
October	0		
November	0		
December	393		
Total	507,704	1,682	(99.7)



Tourist Arrivals – January
1,682



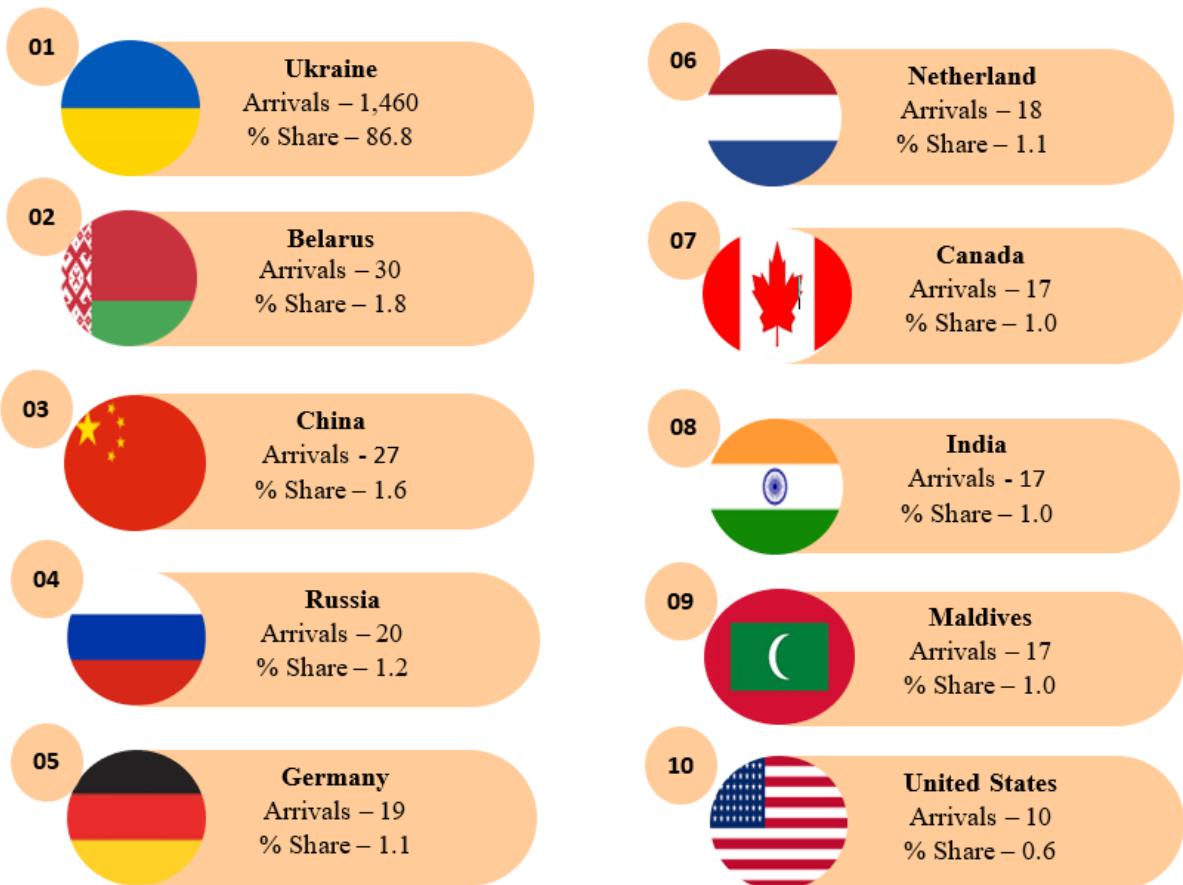
TOURIST ARRIVALS BY REGION AND PERCENTAGE SHARE JANUARY 2021



Europe became the largest source of tourist traffic to Sri Lanka with 93.6 % of the total traffic received in January 2021. Asia and Pacific accounted for 4.8% of the total traffic while Americas accounted for 1.6 %. Globally, all the regions were severely impacted by the pandemic and Asia and Pacific being the first to suffer the impact of the pandemic recorded a decline of 83%, while Middle East and Africa recorded a drop of 75%. The decline recorded for Americas was 69% (World Tourism Barometer, January 2021).

TOP TEN SOURCE MARKETS – JANUARY 2021

Ukraine, Belarus, China, Russian Federation and Germany were Sri Lanka's top five international tourist generating markets in the month of January this year. Ukraine was the largest source of tourist traffic to Sri Lanka with 86.8 % of the total traffic received in above period. Belarus accounted for 1.8 % of the total traffic; while China, Russian Federation and Germany accounted for 1.6 %, 1.2 % and 1.1 % respectively. It is noteworthy that increased tourist arrivals from the Central and Eastern European countries is mainly due to the pilot project carried out from 28th December 2020 by the Government of Sri Lanka.



Rank	Country of Residence	Tourist Arrivals January 2021			Tourist Arrivals January 2020
		By Air	By Sea	Total	
1	UKRAINE	1,460	-	1,460	8,549
2	BELARUS	30	-	30	1,099
3	CHINA	27	-	27	22,363
4	RUSSIAN FEDERATION	20	-	20	19,616
5	GERMANY	19	-	19	11,494
6	NETHERLANDS	18	-	18	3,538
7	CANADA	17	-	17	5,510
8	INDIA	17	-	17	41,448
9	MALDIVES	17	-	17	4,264
10	UNITED STATES	10	-	10	7,494

INTERNATIONAL TOURIST ARRIVALS BY COUNTRY OF RESIDENCE

	January 2021			Total Tourist Arrivals January 2020
	Tourist Arrivals			
	By Air	By Sea	Total	
<u>AMERICAS</u>	27	0	27	14,224
North America	27	0	27	13,142
Canada	17	0	17	5,510
Mexico	-	-	-	138
United States	10	0	10	7,494
Caribbean & Central America	-	-	-	80
Costa Rica	-	-	-	9
Jamaica	-	-	-	7
Others	-	-	-	64
South America	-	-	-	1,002
Argentina	-	-	-	224
Brazil	-	-	-	467
Chile	-	-	-	128
Colombia	-	-	-	88
Others	-	-	-	95
<u>AFRICA</u>	-	-	-	1,297
<u>North Africa</u>	-	-	-	306
Morocco	-	-	-	125
Sudan	-	-	-	67
Others	-	-	-	114
Sub-Saharan Africa	-	-	-	991
Kenya	-	-	-	45
Mauritius	-	-	-	107
Nigeria	-	-	-	12
South Africa	-	-	-	686
Others	-	-	-	141

	January 2021			Total Tourist Arrivals January 2020
	Tourist Arrivals			
	By Air	By Sea	Total	
ASIA & PACIFIC	80	0	80	92,201
North East Asia	28	0	28	28,181
China	27	0	27	22,363
Japan	1	0	1	2,917
South Korea	-	-	-	1,577
Taiwan	-	-	-	1,296
Others	-	-	-	28
South East Asia	12	0	12	5,584
Cambodia	-	-	-	146
Indonesia	3	0	3	401
Malaysia	1	0	1	1,399
Myanmar	1	0	1	190
Philippines	6	0	6	1,199
Singapore	1	0	1	1,214
Thailand	-	-	-	736
Vietnam	-	-	-	287
Others	-	-	-	12
Oceania	6	0	6	9,192
Australia	3	0	3	8,115
New Zealand	3	0	3	1,035
Others	-	-	-	42
South Asia	34	0	34	46,904
Afghanistan	-	-	-	65
Bangladesh	-	-	-	1,014
Bhutan	-	-	-	137
India	17	0	17	41,448
Iran	-	-	-	330
Maldives	17	0	17	4,264
Nepal	-	-	-	589
Pakistan	-	-	-	1,397

	January 2021			
	Tourist Arrivals			
	By Air	By Sea	Total	Total Tourist Arrivals January 2020
EUROPE	1,575	0	1,575	122,761
Northern Eur.	3	0	3	38,414
Denmark	-	-	-	2,176
Finland	-	-	-	986
Norway	-	-	-	1,379
Sweden	-	-	-	3,099
United Kingdom	3	0	3	21,138
Others	-	-	-	996
Western Eur.	49	0	49	38,124
Austria	5	0	5	1,674
Belgium	-	-	-	1,243
France	4	0	4	9,352
Germany	19	0	19	11,494
Netherlands	18	0	18	3,538
Switzerland	3	0	3	2,508
Others	-	-	-	61
Central / Eastern Europe	1,520	0	1,520	32,833
Belarus	-	-	-	1,099
Czech Republic	-	-	-	2,673
Estonia	-	-	-	394
Hungary	-	-	-	758
Kazakhstan	1	0	1	1,182
Lithuania	-	-	-	514
Poland	-	-	-	5,577
Romania	-	-	-	785
Russian Federation	20	0	20	19,616
Slovakia	-	-	-	539
Ukraine	1,460	0	1460	8,549
Others	39	-	39	1,197

January 2021				
Tourist Arrivals				
	By Air	By Sea	Total	Total Tourist Arrivals January 2020
Southern / Mediterranean Europe	3	0	3	13,390
Greece	-	-	-	598
Italy	2	0	2	4,454
Portugal	-	-	-	568
Spain	-	-	-	1,509
Turkey	1	0	1	1,145
Israel	-	-	-	1,688
Others	-	-	-	1,112
MIDDLE EAST	0	0	0	5,042
Bahrain	-	-	-	404
Egypt	-	-	-	404
Iraq	-	-	-	71
Jordan	-	-	-	361
Kuwait	-	-	-	465
Lebanon	-	-	-	212
Oman	-	-	-	768
Qatar	-	-	-	69
Saudi Arabia	-	-	-	3,914
United Arab Emirates	-	-	-	199
Others	-	-	-	244
TOTAL	1,682	0	1,682	228,434

* All visitor arrival statistics in this report are from the Department of Immigration & Emigration.