

**MAY
2021**

MONTHLY TOURIST ARRIVALS REPORT



Sri Lanka Tourism Development Authority
www.sltda.gov.lk

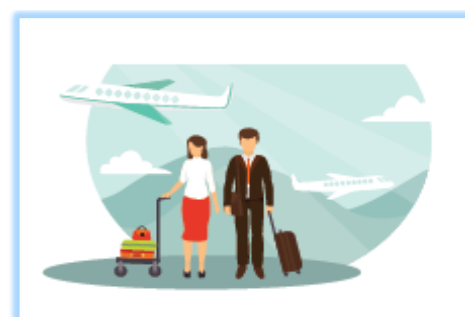


SUMMARY

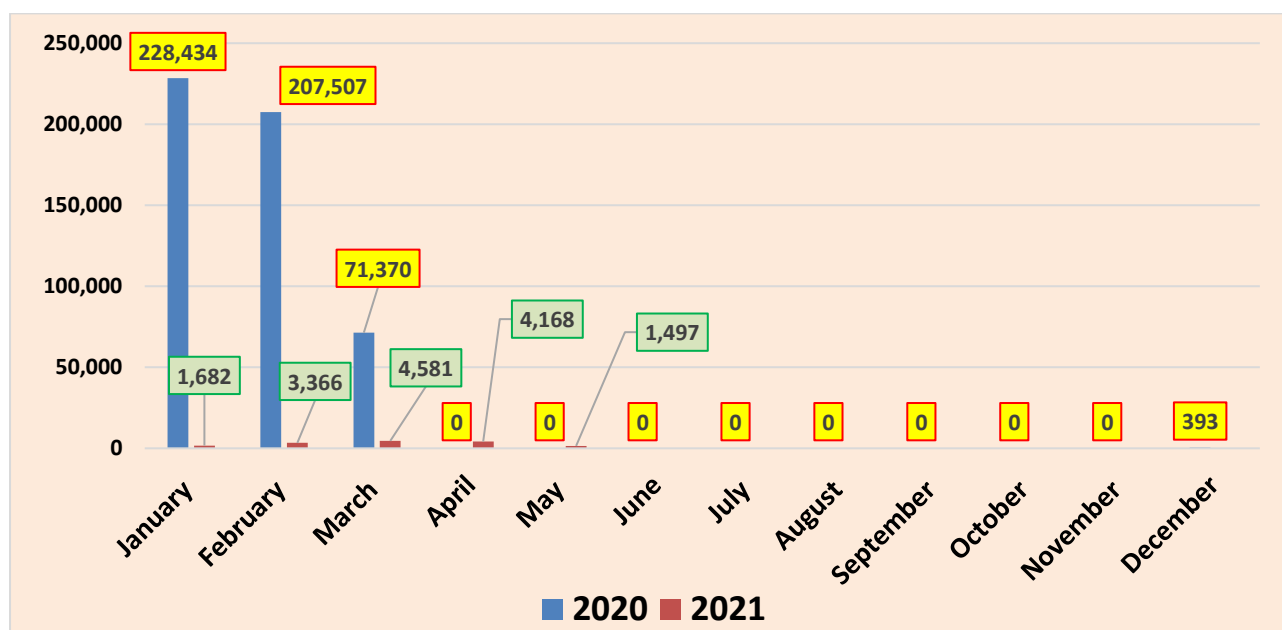
The total number of international tourist arrivals to Sri Lanka during May 2021 was 1,497. The sharp contraction in arrivals in comparison to April is mainly due to the closure of borders from 21st of May to 31st of May, imposed with a view to control the COVID-19 situation in the country. As at 21st May 2021, 15,294 of tourists had visited Sri Lanka for this year. It is a decline of 97 % over last year when 507,311 tourists had visited the country from January to 18th March. The figures reflect the evolution of COVID-19 and its palpable impact on the travel and tourism industry.

The largest source markets recorded for the month of May was China, followed by the Germany, and United States.

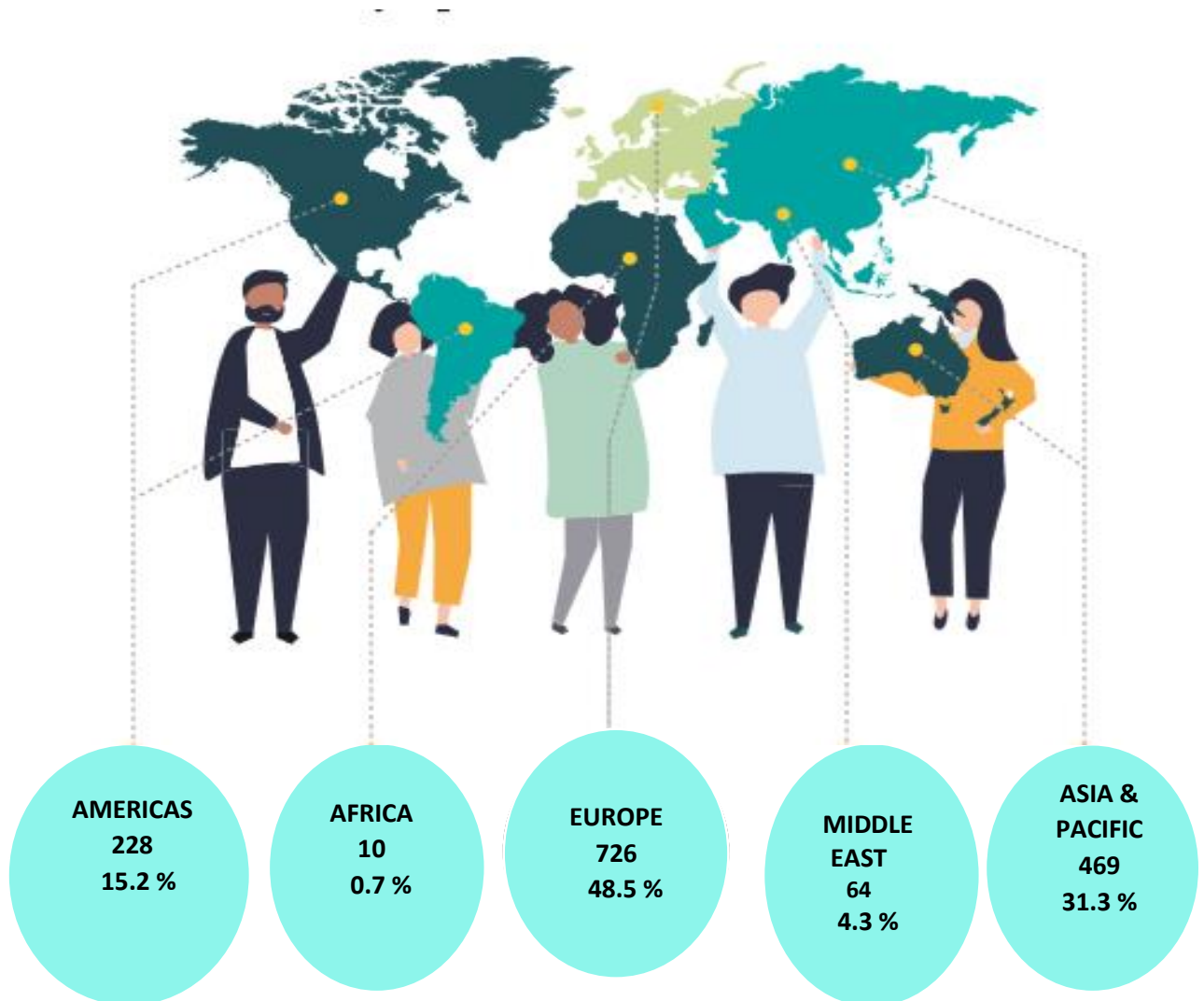
Month	2020	2021	% change 2021/20
January	228,434	1,682	(99.3)
February	207,507	3,366	(98.4)
March	71,370	4,581	(93.6)
April	0	4,168	-
May	0	1,497	-
June	0	-	-
July	0	-	-
August	0	-	-
September	0	-	-
October	0	-	-
November	0	-	-
December	393	-	-
Total (Jan ~May)	507,311	15,294	(97.0)
TOTAL	507,704		



Tourist Arrivals – May
1,497



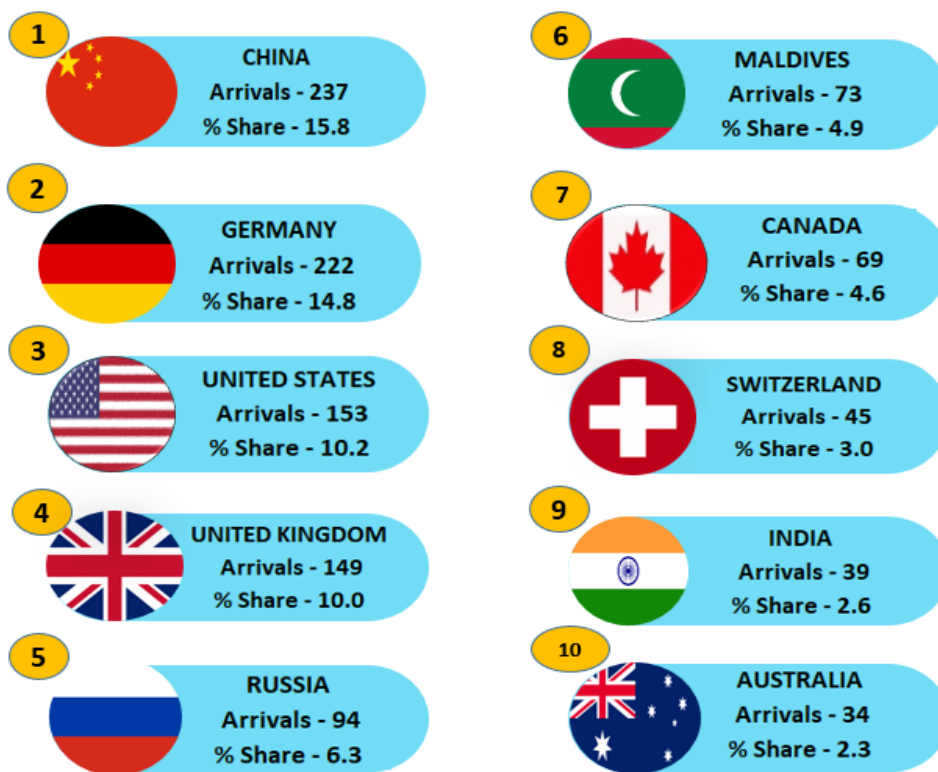
TOURIST ARRIVALS BY REGION AND PERCENTAGE SHARE- MAY 2021



Europe became the largest source of tourist traffic to Sri Lanka with 48.5 % of the total traffic received in May 2021. Asia and Pacific accounted for 31.3% of the total traffic, Americas 15.2 %, Middle East 4.3 % and Africa 0.7%. In comparison to arrivals up to May last year all regions have recorded a decline in arrivals. The emergence of new variants resulting in escalating COVID 19 cases, strict travel restrictions including mandatory testing, quarantines and local lockdowns have contributed to the curtailment in international travel (UNWTO Barometer, Volume 19- March 2021).

TOP TEN SOURCE MARKETS - MAY 2021

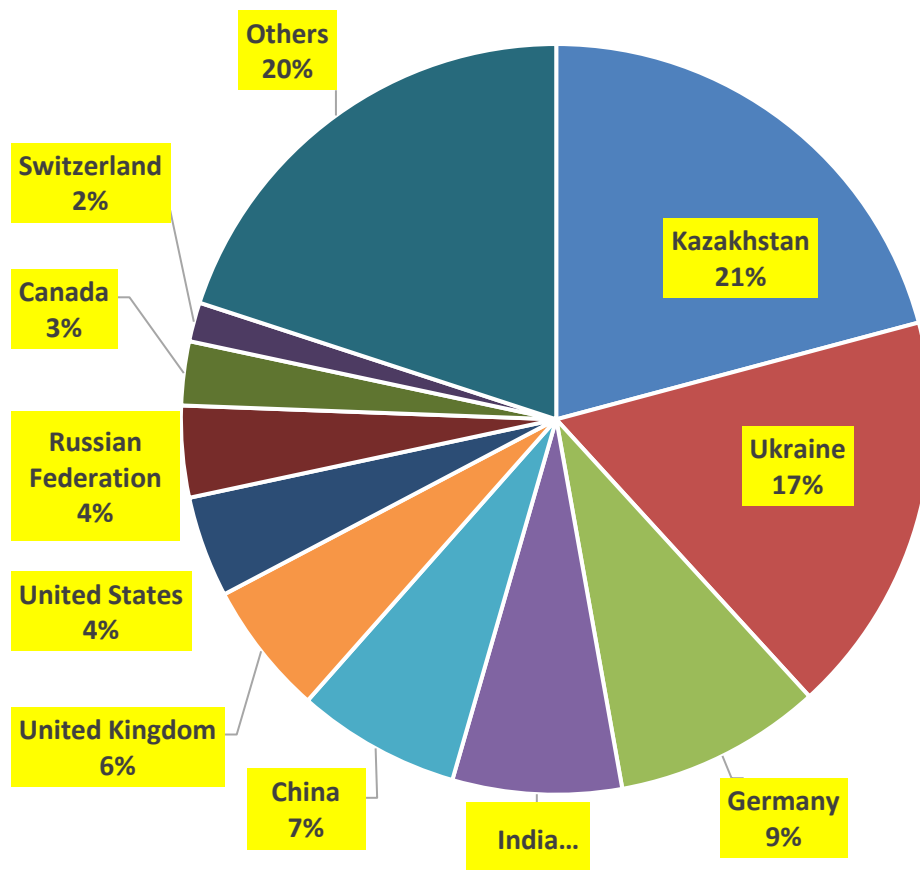
China, Germany, United States, United Kingdom and Russia were Sri Lanka's top five international tourist generating markets in the month of May this year. China was the largest source of tourist traffic to Sri Lanka with 15.8 % of the total traffic received in above period. Germany accounted for 14.8% of the total traffic; while United States, United Kingdom and Russia accounted for 10.2%, 10% and 6.3% respectively. The presence of countries from the Americas, Western, Central & Eastern Europe and Asia Pacific regions among the top source markets reflects the gradual revitalization of tourism industry fuelled by factors such as gradual improvement of traveller confidence, lifting of travel restrictions and roll out of the COVID 19 vaccine. It is noteworthy that India which was gradually regaining its position as the top source market has moved further down in the list owing to the travel restrictions imposed in the wake of the escalating pandemic situation in India.



Rank	Country of Residence	Tourist Arrivals May 2021			Tourist Arrivals May 2020
		By Air	By Sea	Total	
1	China	237	-	237	0
2	Germany	222	-	222	0
3	United States	153	-	153	0
4	United Kingdom	149	-	149	0
5	Russian Federation	94	-	94	0
6	Maldives	73	-	73	0
7	Canada	69	-	69	0
8	Switzerland	45	-	45	0
9	India	39	-	39	0
10	Australia	34	-	34	0

TOP TEN SOURCE MARKETS – JANUARY TO MAY- 2021

Kazakhstan, Ukraine, Germany, India and China were Sri Lanka’s top five international tourist generating markets from January to May this year. Kazakhstan was the largest source of tourist traffic to Sri Lanka with 21% of the total traffic received from January to May 2021. Ukraine accounted for 17% of the total traffic; while Germany, India & China accounted for 9%, 7% (both) respectively. It is noteworthy that total arrivals up to May from Kazakhstan had recorded a growth in comparison to total arrivals up to May 2020 owing to the pilot project carried out to revive the industry following a 10-month pandemic-induced closure.



Rank	Country of Residence	Tourist Arrivals (Jan-May) 2021	Tourist Arrivals (Jan – May) 2020	% Change (Jan - May 2021& Jan - May 2020)
1	Kazakhstan	3,188	2,333	36.6
2	Ukraine	2,657	16,776	(84.2)
3	Germany	1,371	34,507	(96.0)
4	India	1,114	89,357	(98.8)
5	China	1,079	26,147	(95.9)
6	United Kingdom	881	55,455	(98.4)
7	United States	668	16,842	(96.0)
8	Russian Federation	603	49,397	(98.8)
9	Canada	421	12,436	(96.6)
10	Switzerland	258	6,389	(96.0)

INTERNATIONAL TOURIST ARRIVALS BY COUNTRY OF RESIDENCE

	May 2021			Total Tourist Arrivals May 2020	% Change May (21/20)	Total Tourist Arrivals up to May 2021	Total Tourist Arrivals up to May 2020	% Change up to May 2021/20
	Tourist Arrivals							
	By Air	By Sea	Total					
AMERICAS	228	0	228	0	-	1,146	31,843	(96.4)
North America	222	0	222	0	-	1,095	29,627	(96.3)
Canada	69	0	69	0	-	421	12,436	(96.6)
Mexico	0	0	0	0	-	6	349	(98.3)
United States	153	0	153	0	-	668	16,842	(96.0)
Caribbean & Central America	0	0	0	0	-	14	226	(93.8)
Costa Rica	0	0	0	0	-	0	33	(100.0)
Jamaica	0	0	0	0	-	1	25	(96.0)
Others	0	0	0	0	-	13	168	(92.3)
South America	6	0	6	0	-	37	1,990	(98.1)
Argentina	1	0	1	0	-	6	416	(98.6)
Brazil	2	0	2	0	-	14	875	(98.4)
Chile	0	0	0	0	-	1	271	(99.6)
Colombia	3	0	3	0	-	12	201	(94.0)
Others	0	0	0	0	-	4	227	(98.2)
AFRICA	10	0	10	0	-	101	2,880	(96.5)
North Africa	0	0	0	0	-	6	689	(99.1)
Morocco	0	0	0	0	-	3	311	(99.0)
Sudan	0	0	0	0	-	2	143	(98.6)
Others	0	0	0	0	-	1	235	(99.6)
Sub-Saharan Africa	10	0	10	0	-	95	2,191	(95.7)
Kenya	0	0	0	0	-	2	110	(98.2)
Mauritius	0	0	0	0	-	3	170	(98.2)
Nigeria	0	0	0	0	-	2	25	(92.0)
South Africa	9	0	9	0	-	64	1,364	(95.3)
Others	1	0	1	0	-	24	522	(95.4)

	May 2021			Total Tourist Arrivals May 2020	% Change May (21/20)	Total Tourist Arrivals up to May 2021	Total Tourist Arrivals up to May 2020	% Change up to May 2021/20
	Tourist Arrivals							
	By Air	By Sea	Total					
ASIA & PACIFIC	469	0	469	0	-	2,979	181,154	(98.4)
North East Asia	246	0	246	0	-	1,151	37,320	(96.9)
China	237	0	237	0	-	1,079	26,147	(95.9)
Japan	8	0	8	0	-	49	6,644	(99.3)
South Korea	1	0	1	0	-	15	2,499	(99.4)
Taiwan	0	0	0	0	-	8	1,985	(99.6)
Others	0	0	0	0	-	0	45	(100.0)
South East Asia	50	0	50	0	-	178	14,927	(98.8)
Cambodia	0	0	0	0	-	1	372	(99.7)
Indonesia	1	0	1	0	-	18	1,114	(98.4)
Malaysia	2	0	2	0	-	17	3,494	(99.5)
Myanmar	2	0	2	0	-	13	532	(97.6)
Philippines	26	0	26	0	-	83	4,249	(98.0)
Singapore	11	0	11	0	-	20	2,545	(99.2)
Thailand	3	0	3	0	-	14	1,880	(99.3)
Vietnam	5	0	5	0	-	12	709	(98.3)
Others	0	0	0	0	-	0	32	(100.0)
Oceania	39	0	39	0	-	184	22,706	(99.2)
Australia	34	0	34	0	-	150	20,283	(99.3)
New Zealand	5	0	5	0	-	34	2,324	(98.5)
Others	0	0	0	0	-	0	99	(100.0)
South Asia	134	0	134	0	-	1,466	106,201	(98.6)
Afghanistan	1	0	1	0	-	3	146	(97.9)
Bangladesh	6	0	6	0	-	20	1,986	(99.0)
Bhutan	1	0	1	0	-	2	208	(99.0)
India	39	0	39	0	-	1,114	89,357	(98.8)
Iran	3	0	3	0	-	72	648	(88.9)
Maldives	73	0	73	0	-	191	9,407	(98.0)
Nepal	2	0	2	0	-	7	1,384	(99.5)
Pakistan	9	0	9	0	-	57	3,065	(98.1)

	May 2021			Total Tourist Arrivals May 2020	% Change May (21/20)	Total Tourist Arrivals up to May 2021	Total Tourist Arrivals up to May 2020	% Change up to May 2021/20
	Tourist Arrivals							
	By Air	By Sea	Total					
EUROPE	726	0	726	0	-	10,791	281,203	(96.2)
Northern Eur.	176	0	176	0	-	1,122	75,146	(98.5)
Denmark	5	0	5	0	-	47	4,905	(99.0)
Finland	5	0	5	0	-	24	2,298	(99.0)
Norway	2	0	2	0	-	54	3,019	(98.2)
Sweden	7	0	7	0	-	57	7,061	(99.2)
United Kingdom	149	0	149	0	-	881	55,455	(98.4)
Others	8	0	8	0	-	59	2,408	(97.5)
Western Eur.	315	0	315	0	-	2,147	82,229	(97.4)
Austria	9	0	9	0	-	103	4,300	(97.6)
Belgium	1	0	1	0	-	39	3,371	(98.8)
France	27	0	27	0	-	227	24,838	(99.1)
Germany	222	0	222	0	-	1,371	34,507	(96.0)
Netherlands	11	0	11	0	-	137	8,656	(98.4)
Switzerland	45	0	45	0	-	258	6,389	(96.0)
Others	0	0	0	0	-	12	168	(92.9)
Central / Eastern Europe	159	0	159	0	-	7,122	100,373	(92.9)
Belarus	0	0	0	0	-	81	2,638	(96.9)
Czech Republic	5	0	5	0	-	126	7,599	(98.3)
Estonia	0	0	0	0	-	33	1,185	(97.2)
Hungary	0	0	0	0	-	19	1,588	(98.8)
Kazakhstan	2	0	2	0	-	3,188	2,333	36.6
Lithuania	1	0	1	0	-	19	1,054	(98.2)
Poland	9	0	9	0	-	91	11,908	(99.2)
Romania	2	0	2	0	-	40	1,724	(97.7)
Russian Federation	94	0	94	0	-	603	49,397	(98.8)
Slovakia	8	0	8	0	-	87	1,513	(94.2)
Ukraine	18	0	18	0	-	2,657	16,776	(84.2)
Others	20	0	20	0	-	178	2,658	(93.3)

	May 2021			Total Tourist Arrivals May 2020	% Change May (21/20)	Total Tourist Arrivals up to May 2021	Total Tourist Arrivals up to May 2020	% Change up to May 2021/20
	Tourist Arrivals							
	By Air	By Sea	Total					
Southern / Mediterranean Europe	76	0	76	0	-	400	23,455	(98.3)
Greece	2	0	2	0	-	10	1,573	(99.4)
Italy	29	0	29	0	-	131	8,603	(98.5)
Portugal	1	0	1	0	-	17	1,602	(98.9)
Spain	20	0	20	0	-	104	3,385	(96.9)
Turkey	9	0	9	0	-	39	2,121	(98.2)
Israel	8	0	8	0	-	56	3,556	(98.4)
Others	7	0	7	0	-	43	2,615	(98.4)
MIDDLE EAST	64	0	64	0	-	277	10,231	(97.3)
Bahrain	13	0	13	0	-	23	549	(95.8)
Egypt	3	0	3	0	-	23	956	(97.6)
Iraq	3	0	3	0	-	7	138	(94.9)
Jordan	12	0	12	0	--	64	627	(89.8)
Kuwait	0	0	0	0	-	6	825	(99.3)
Lebanon	16	0	16	0	-	115	483	(76.2)
Oman	0	0	0	0	-	1	1,045	(99.9)
Qatar	0	0	0	0	-	3	129	(97.7)
Saudi Arabia	7	0	7	0	-	9	4,755	(99.8)
United Arab Emirates	6	0	6	0	-	17	352	(95.2)
Others	4	0	4	0	-	9	372	(97.6)
TOTAL	1,497	0	1,497	0	-	15,294	507,311	(97.0)

* All visitor arrival statistics in this report are from the Department of Immigration & Emigration.