

**F  
E  
B  
R  
U  
A  
R  
Y**

# **WEEKLY TOURIST ARRIVALS REPORT**





# SUMMARY REPORT

## Tourist arrivals from 01<sup>st</sup> to 13<sup>th</sup> February 2025

	2018	2024	2025	
Month	Number of Tourists	Number of Tourists	Number of Tourists	Percentage Change (25/24)
January	238,924	208,253	252,761	21.4
February	235,618	218,350	115,043	
March	233,382	209,181		
April	180,429	148,867		
May	129,466	112,128		
June	146,828	113,470		
July	217,829	187,810		
August	200,359	164,609		
September	149,087	122,140		
October	153,123	135,907		
November	195,582	184,158		
December	253,169	248,592		
<b>TOTAL</b>	<b>2,333,796</b>	<b>2,053,465</b>	<b>367,804</b>	



**Tourist arrivals  
01<sup>st</sup> to 13<sup>th</sup> February 2025**

**115,043**



# Daily tourist arrivals, 01<sup>st</sup> to 13<sup>th</sup> February 2025



**F  
E  
B  
R  
U  
A  
R  
Y**

1 <sup>st</sup> 9,100	8 <sup>th</sup> 9,174	15 <sup>th</sup>	22 <sup>nd</sup>	29 <sup>th</sup>
2 <sup>nd</sup> 9,098	9 <sup>th</sup> 8,837	16 <sup>th</sup>	23 <sup>rd</sup>	30 <sup>th</sup>
3 <sup>rd</sup> 9,974	10 <sup>th</sup> 9,300	17 <sup>th</sup>	24 <sup>th</sup>	31 <sup>st</sup>
4 <sup>th</sup> 7,897	11 <sup>th</sup> 7,730	18 <sup>th</sup>	25 <sup>th</sup>	
5 <sup>th</sup> 8,224	12 <sup>th</sup> 7,837	19 <sup>th</sup>	26 <sup>th</sup>	
6 <sup>th</sup> 8,236	13 <sup>th</sup> 10,498	20 <sup>th</sup>	27 <sup>th</sup>	
7 <sup>th</sup> 9,138	14 <sup>th</sup>	21 <sup>st</sup>	28 <sup>th</sup>	

**Total**

1<sup>st</sup> to 7<sup>th</sup>  
**61,667**

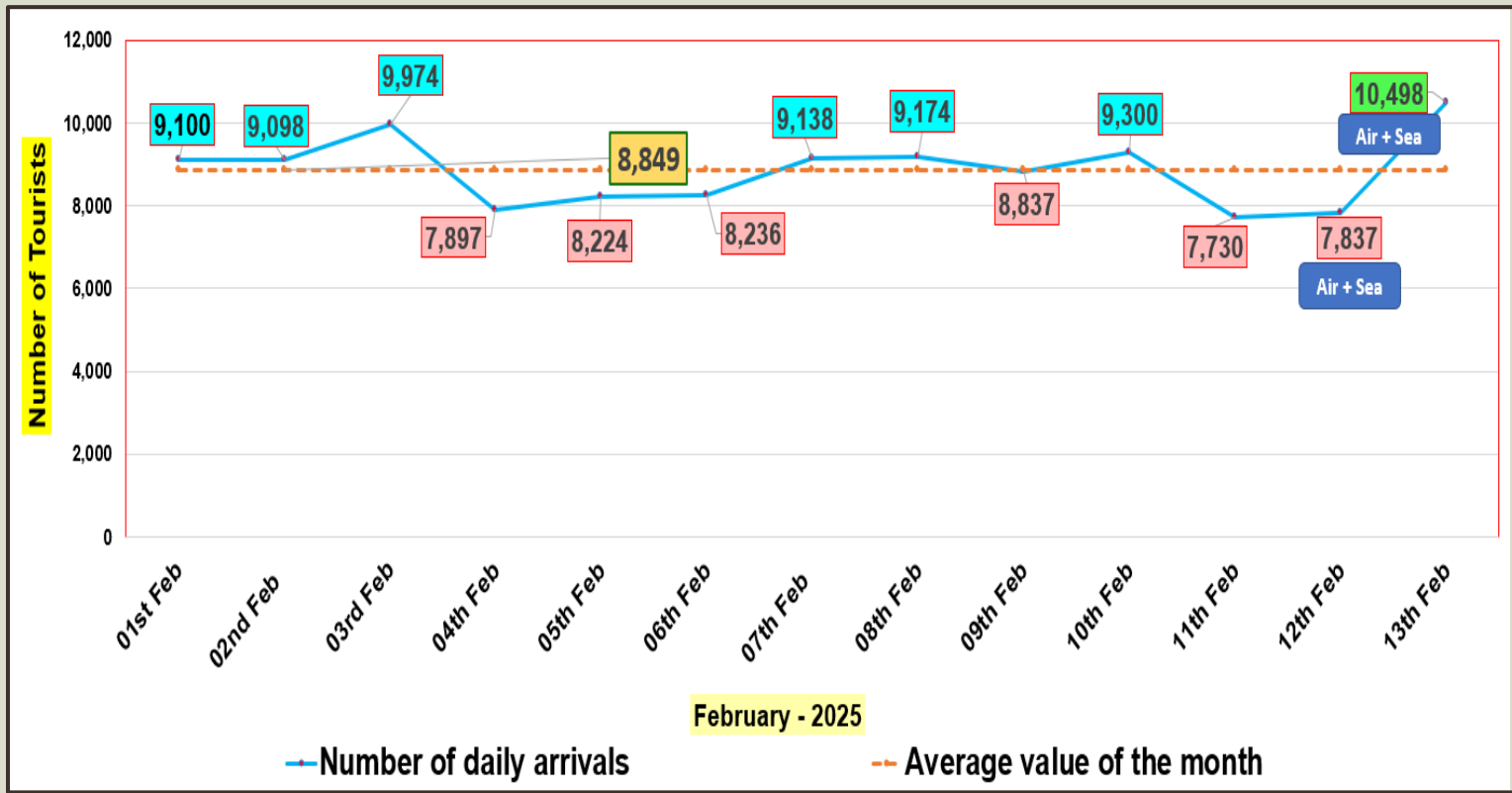
8<sup>th</sup> to 13<sup>th</sup>  
**53,376**



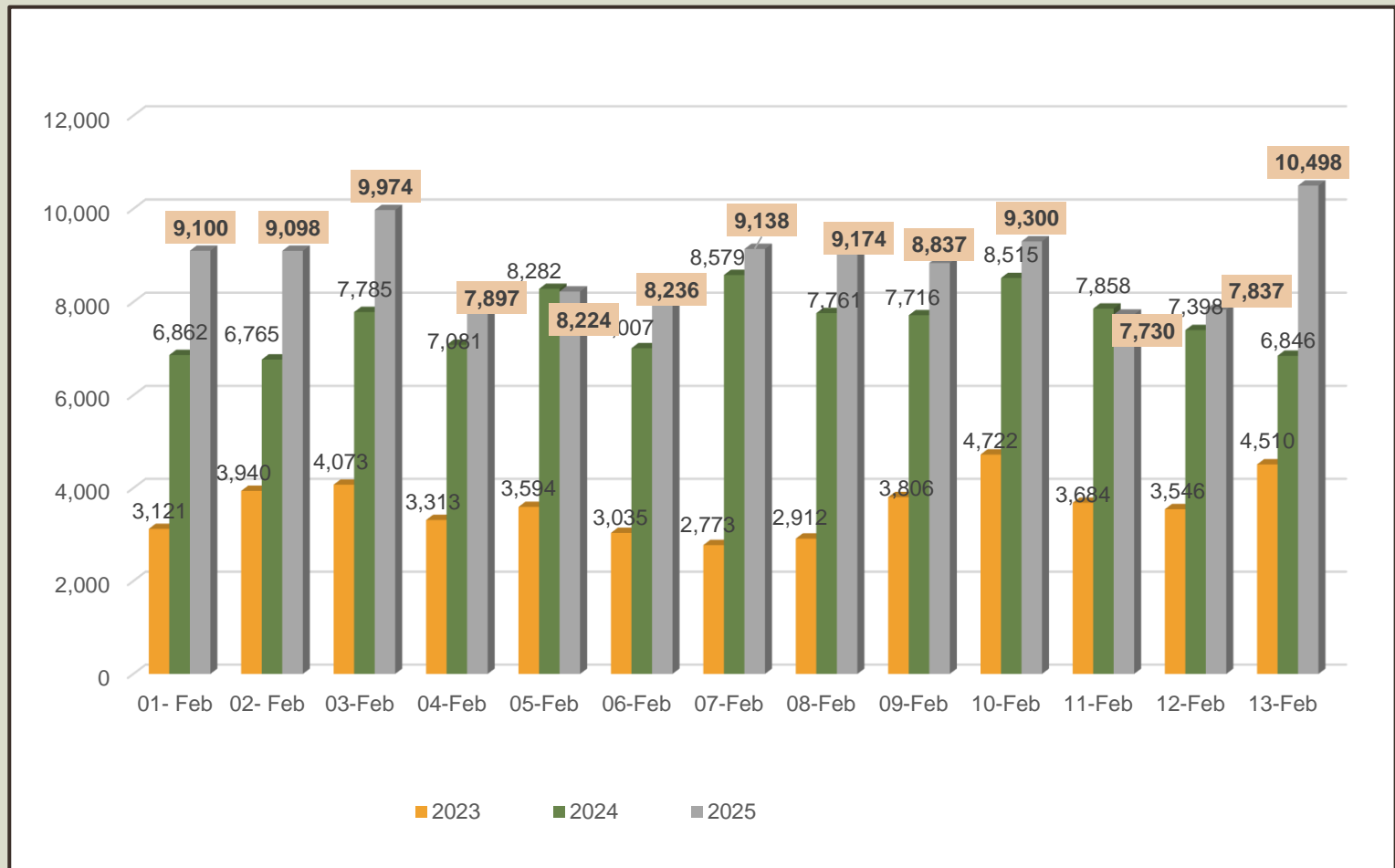




### Daily distribution of tourist arrivals, 01<sup>st</sup> to 13<sup>th</sup> February 2025

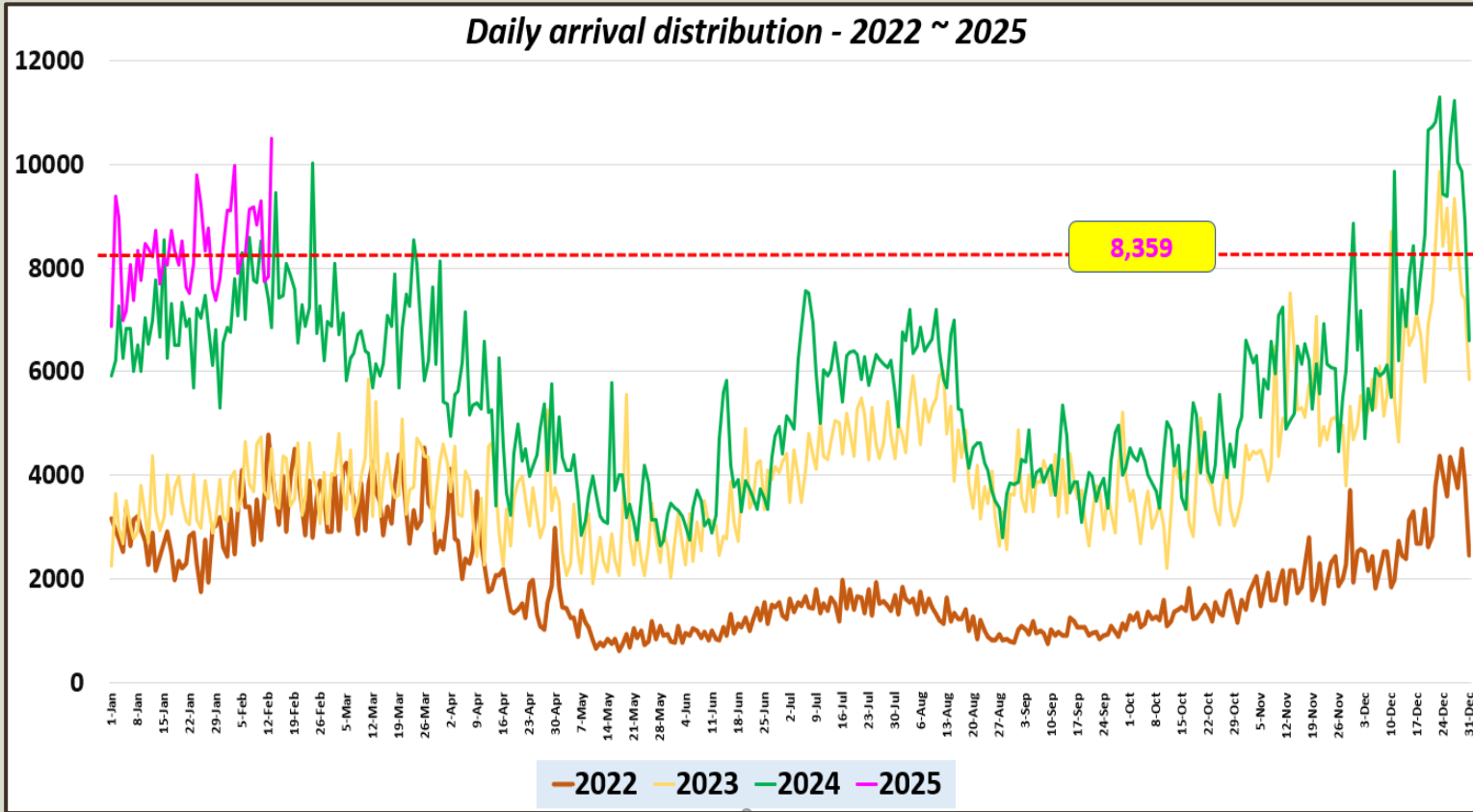


### Number of tourist arrivals, 2023, 2024 & 2025 (01<sup>st</sup> to 13<sup>th</sup> February)

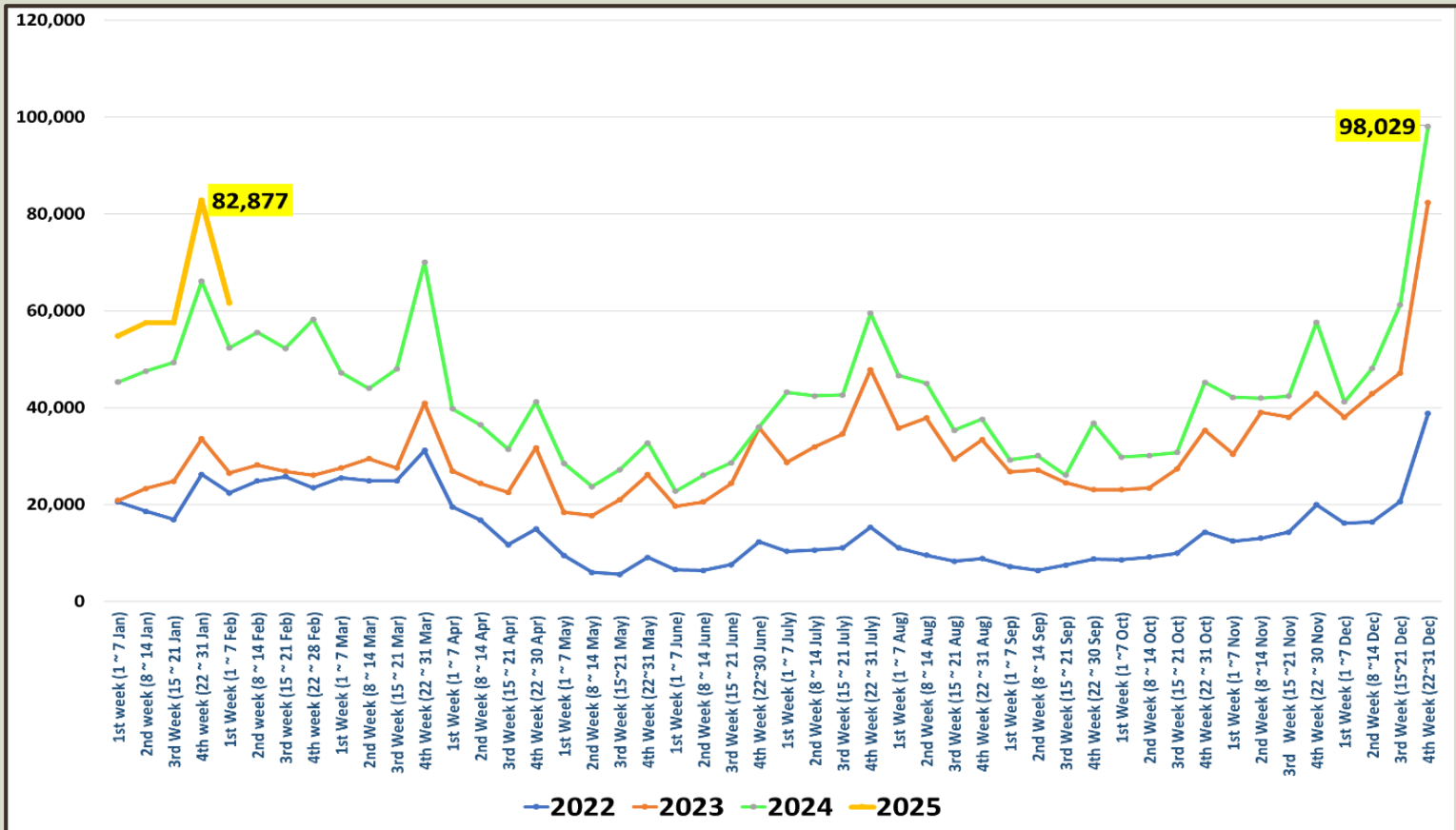




### Daily trend of tourist arrivals, 2022 - 2025








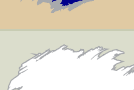




### Weekly distribution of tourist arrivals, 2022- 2025





## Top ten source markets, 01<sup>st</sup> to 13<sup>th</sup> February 2025

Rank		Country	Number of Tourists	Share %
1		India	16,016	13.9%
2		Russian Federation	14,315	12.4%
3		United Kingdom	12,925	11.2%
4		Germany	8,230	7.2%
5		France	7,459	6.5%
6		China	5,961	5.2%
7		Australia	4,236	3.7%
8		Poland	3,874	3.4%
9		Netherlands	3,029	2.6%
10		United States	3,000	2.6%
11		Other	35,998	31.3%
		<b>Total</b>	<b>115,043</b>	



## Top twenty source markets, 01<sup>st</sup> January – 13<sup>th</sup> February 2025

Rank	Country	Number of tourists
1	India	59,391
2	Russian Federation	48,411
3	United Kingdom	34,655
4	Germany	23,280
5	China	22,670
6	France	20,078
7	Australia	13,799
8	Poland	11,459
9	United States	10,067
10	Netherlands	9,513
11	Bangladesh	6,953
12	Italy	6,805
13	Canada	6,760
14	Switzerland	4,990
15	Denmark	4,546
16	Czech Republic	4,402
17	Maldives	4,360
18	Kazakhstan	4,356
19	Israel	4,163
20	Japan	4,032
	Others	63,114
	<b>TOTAL</b>	<b>367,804</b>