

WEEKLY TOURIST ARRIVALS 2025

J
A
N
U
A
R
Y





SUMMARY REPORT

Tourist arrivals from 01st to 31st January 2025

	2018	2024	2025	
Month	Number of Tourists	Number of Tourists	Number of Tourists	Percentage Change (25/24)
January	238,924	208,253	252,761	
February	235,618	218,350		
March	233,382	209,181		
April	180,429	148,867		
May	129,466	112,128		
June	146,828	113,470		
July	217,829	187,810		
August	200,359	164,609		
September	149,087	122,140		
October	153,123	135,907		
November	195,582	184,158		
December	253,169	248,592		
TOTAL	2,333,796	2,053,465	252,761	



Tourist arrivals
01st to 31st January 2025
252,761



Daily tourist arrivals, 01st to 31st January 2025



J
A
N
U
A
R
Y

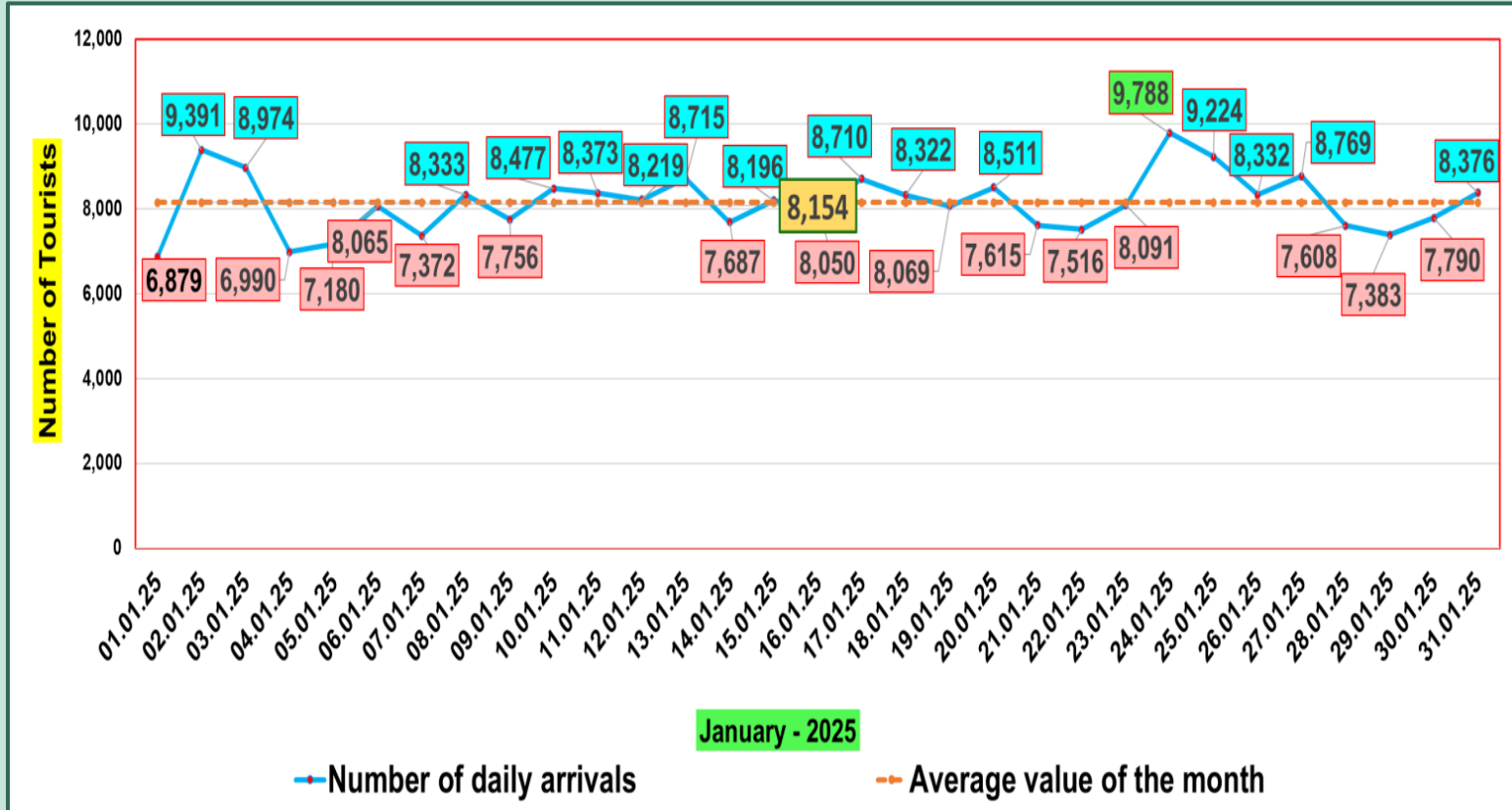
1 st 6,879	8 th 8,333	15 th 8,196	22 nd 7,516	29 th 7,383
2 nd 9,391	9 th 7,756	16 th 8,050	23 rd 8,091	30 th 7,790
3 rd 8,974	10 th 8,477	17 th 8,710	24 th 9,788	31 st 8,376
4 th 6,990	11 th 8,373	18 th 8,322	25 th 9,224	
5 th 7,180	12 th 8,219	19 th 8,069	26 th 8,332	
6 th 8,065	13 th 8,715	20 th 8,511	27 th 8,769	
7 th 7,372	14 th 7,687	21 st 7,615	28 th 7,608	

Total	1 st to 7 th 54,851	8 th to 14 th 57,560	15 th to 21 st 57,473	22 nd to 28 th 59,328	29 th to 31 st 23,549
--------------	--	---	--	--	--

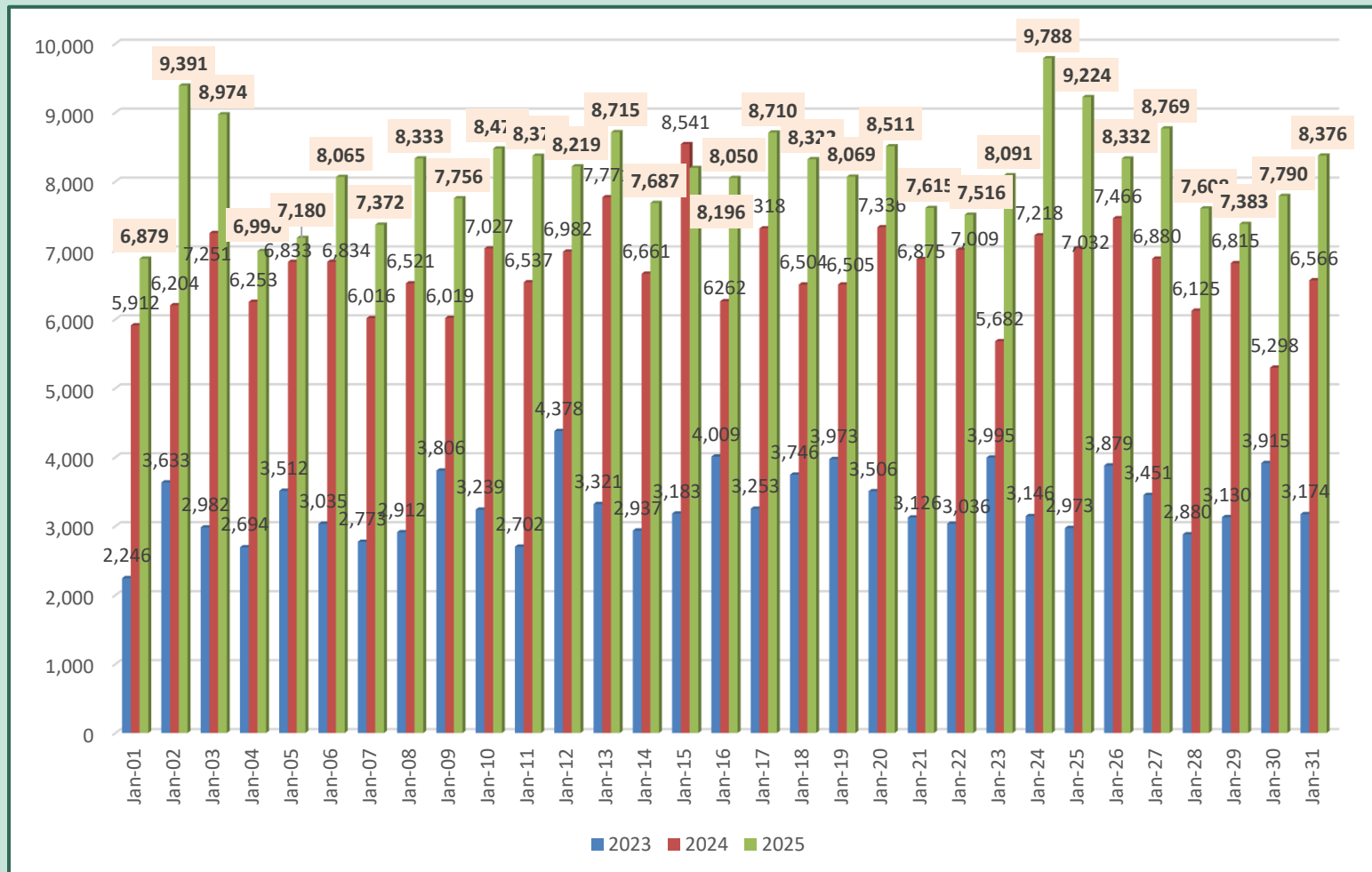




Daily distribution of tourist arrivals, 01st to 31st January 2025

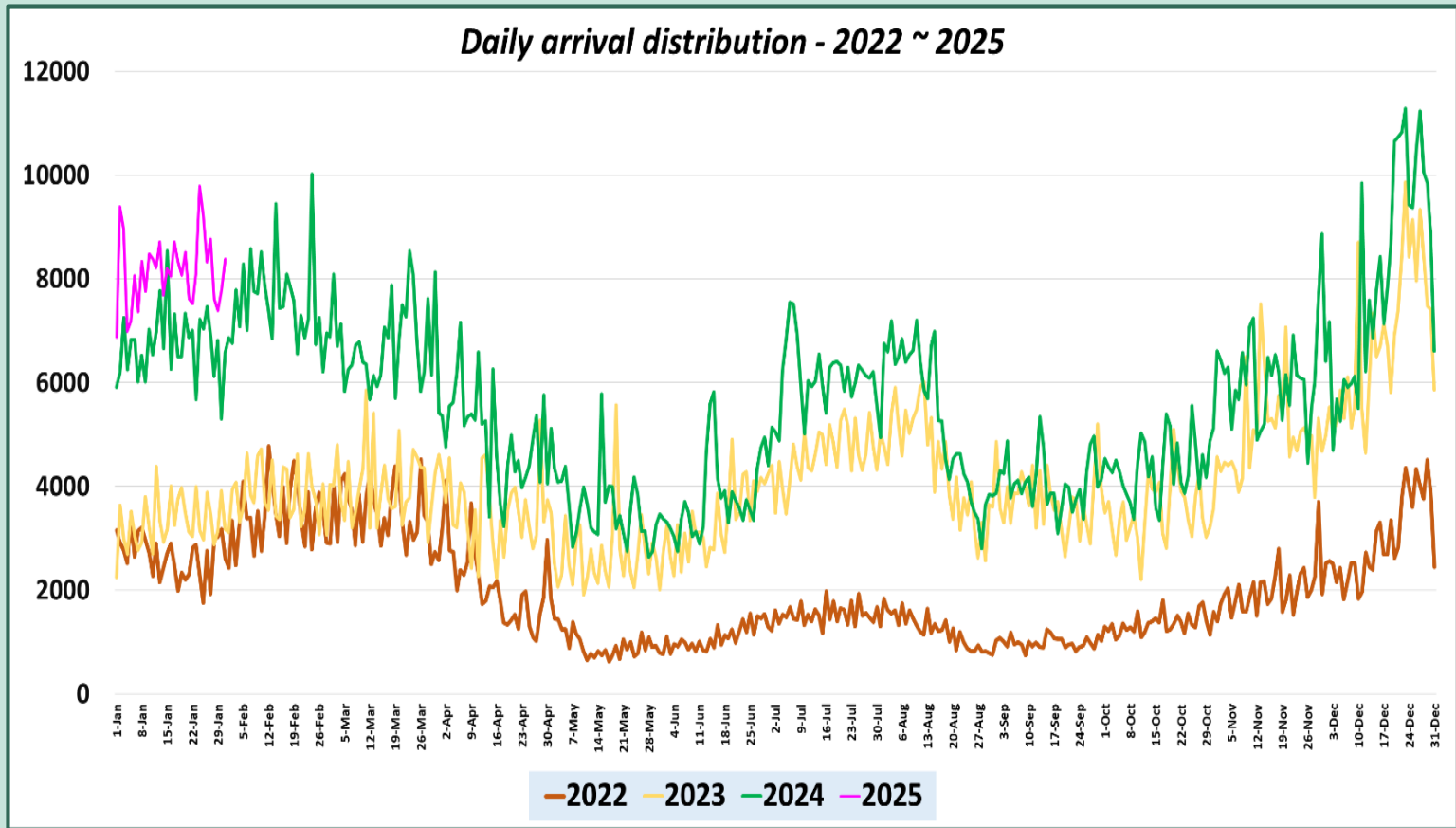


Number of tourist arrivals, 2023, 2024 & 2025 (01st to 31st January)

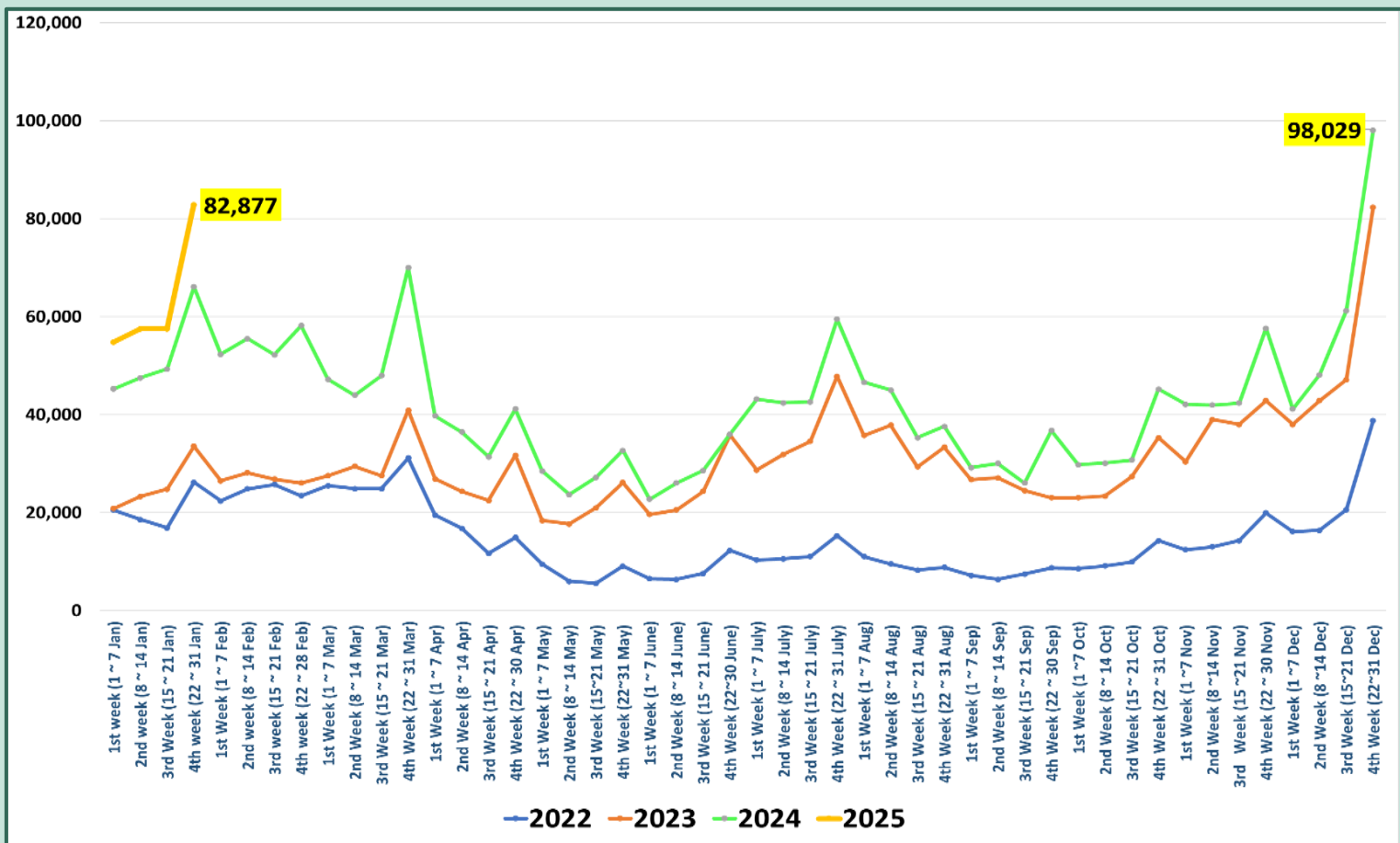




Daily trend of tourist arrivals, 2022 - 2025













Weekly distribution of tourist arrivals, 2022- 2025





Top ten source markets, 01st to 31st January 2025

Rank		Country	Number of Tourists	Share %
1		India	43,375	17.2%
2		Russian Federation	34,096	13.5%
3		United Kingdom	21,730	8.6%
4		China	16,709	6.6%
5		Germany	15,050	6.0%
6		France	12,619	5.0%
7		Australia	9,563	3.8%
8		Poland	7,585	3.0%
9		United States	7,067	2.8%
10		Netherlands	6,484	2.6%
11		Other	78,483	31.1%
		Total	252,761	